

Rail Supply Chain

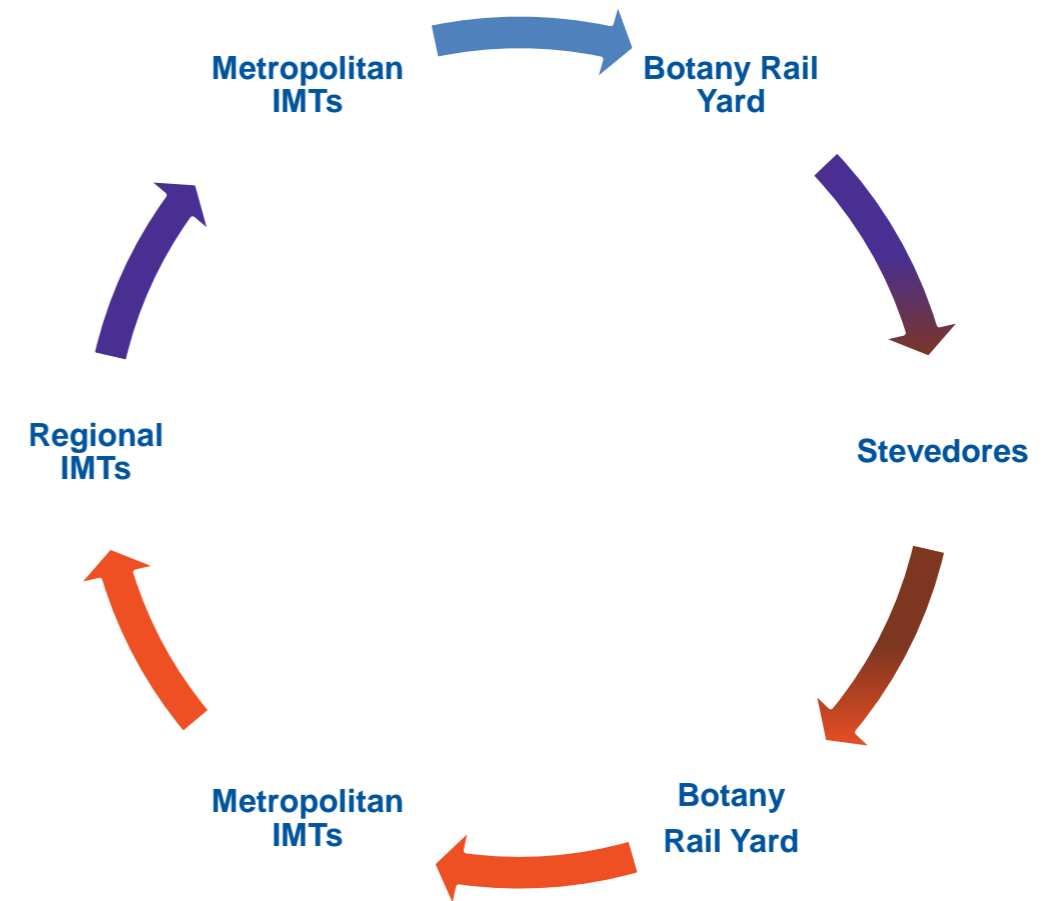
PORT BOTANY LANDSIDE IMPROVEMENT STRATEGY (PBLIS)

TRAIN ON-TIME-RUNNING REPORT - MARCH 2010

Produced 9th April 2010

INDEX

Page	Reference	Title	Direction
3		Quick Reference (Headline KPI's)	
4	1.A	Regional IMTs - Departures	Port-Bound
5	1.B	Regional Border - Arrivals	Port-Bound
6	1.C	Metropolitan IMTs - Departures	Port-Bound
7	1.D	Botany Yard - Arrivals from Metropolitan IMTs	Port-Bound
8	1.E	Botany Yard - Arrivals from Regional IMTs	Port-Bound
9	1.F	Stevedores - Arrivals from Botany Yard	In Port
10	2.A	Stevedores - Departures for Botany Yard	In Port
11	2.B	Botany Yard - Departures for Regional IMTs	Out-Bound
12	2.C	Botany Yard - Departures for Metropolitan IMTs	Out-Bound
13	2.D	Metropolitan IMTs - Arrivals	Out-Bound
14	2.E	Regional Borders - Arrivals	Out-Bound
15	2.F	Regional IMTs - Arrivals	Out-Bound
16		Further Information	



Copyright © 2009 Sydney Ports Corporation. All rights reserved.

Disclaimer. Sydney Ports Corporation

- (i) collects the information contained in this document (Information) from sources over which it has no control,
- (ii) gives no warranty as to the accuracy or completeness of the Information,
- and (iii) notes that use of or reliance on the Information is at the user's own risk.

Full terms and conditions of use. Please see :

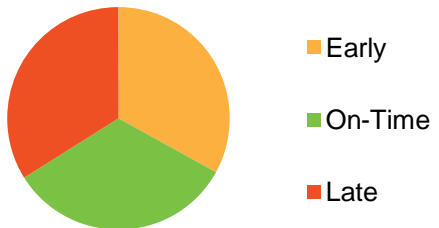
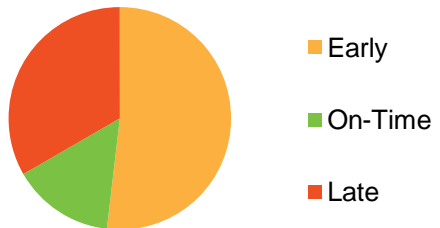
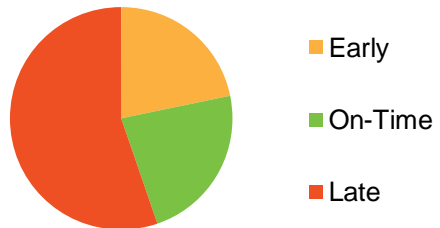
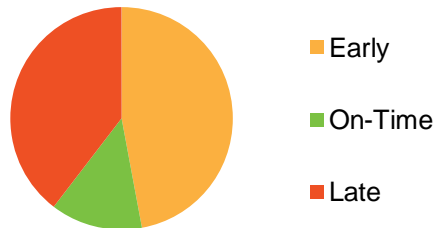
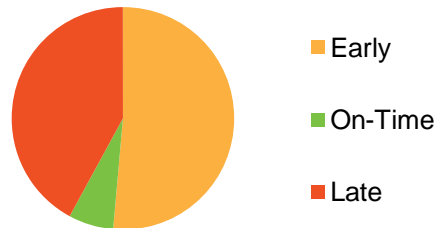
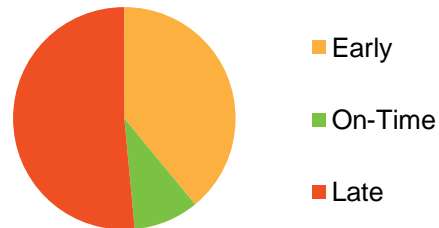
www.sydneyports.com.au/copyright_and_disclaimer

Quick Reference (Headline KPI's)

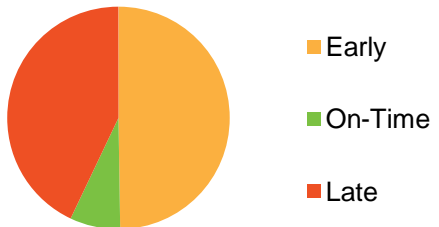
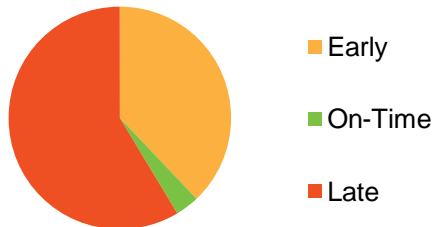
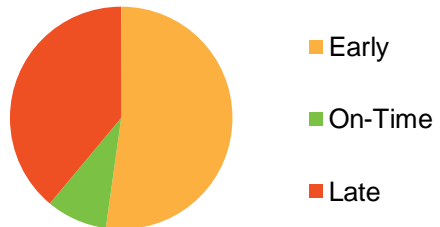
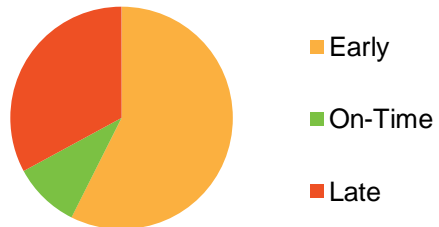
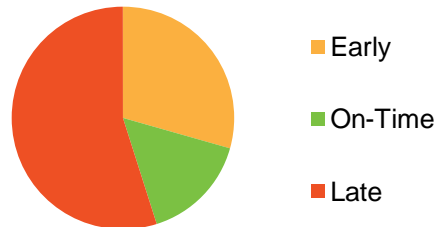
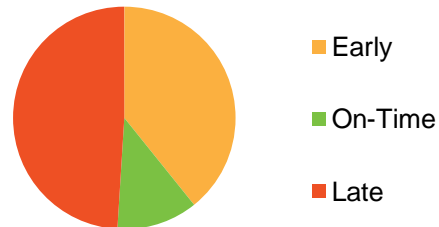
MAR 2010

Designation	Minutes
On-time	(+/-) 5
Early	< -5
Late	> +5

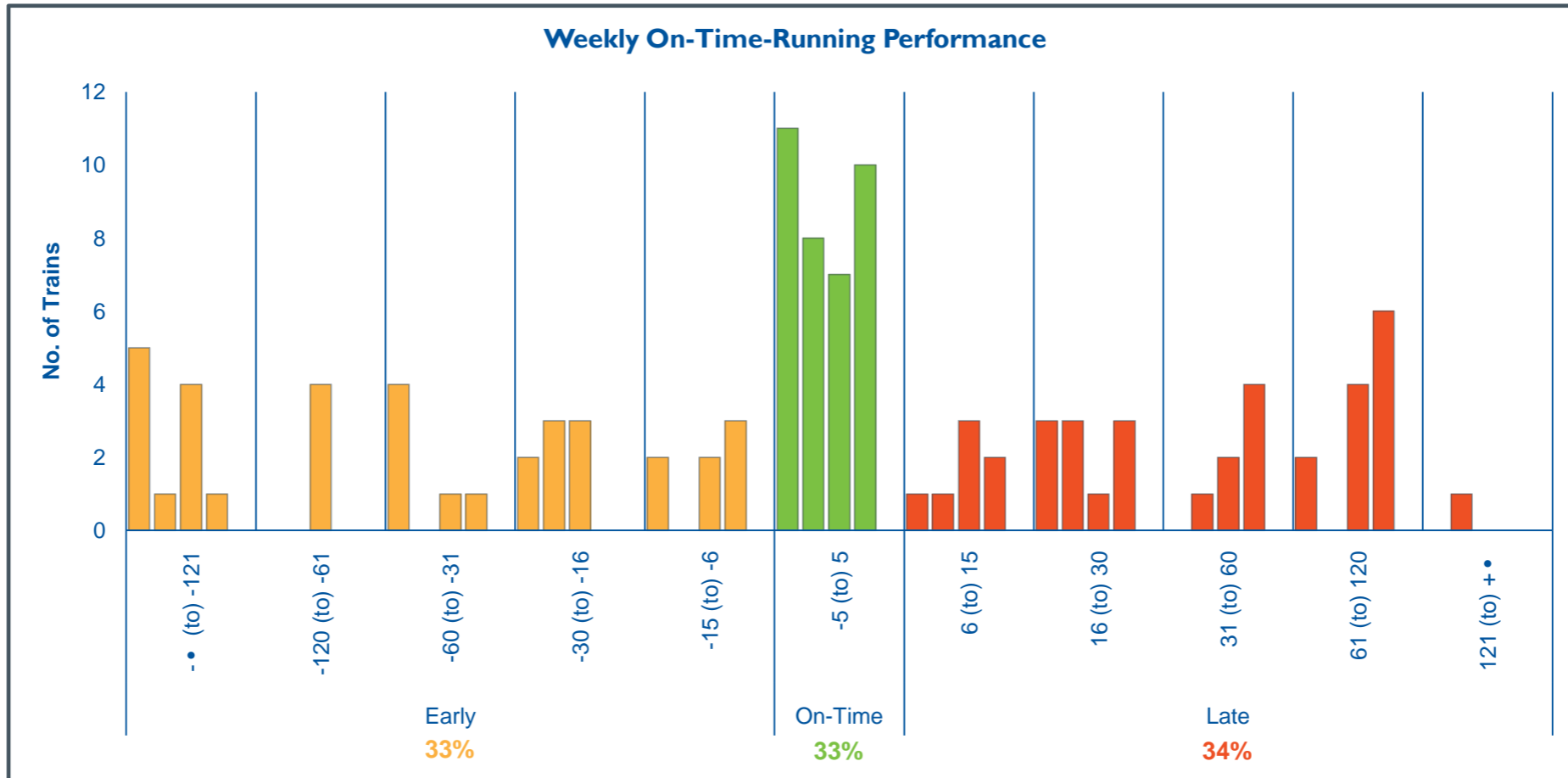
PORT-BOUND

REPORT 1.A	REPORT 1.B	REPORT 1.C	REPORT 1.D	REPORT 1.E	REPORT 1.F
Regional IMTs - Departures	Regional Border - Arrivals	Metropolitan IMTs - Departures	Botany Yard - Arrivals from Metropolitan IMTs	Botany Yard - Arrivals from Regional IMTs	Stevedores - Arrivals from Botany Yard
Early 33%	Early 52%	Early 22%	Early 47%	Early 51%	Early 39%
On-Time 33%	On-Time 15%	On-Time 23%	On-Time 13%	On-Time 7%	On-Time 9%
Late 34%	Late 33%	Late 55%	Late 40%	Late 42%	Late 51%
					

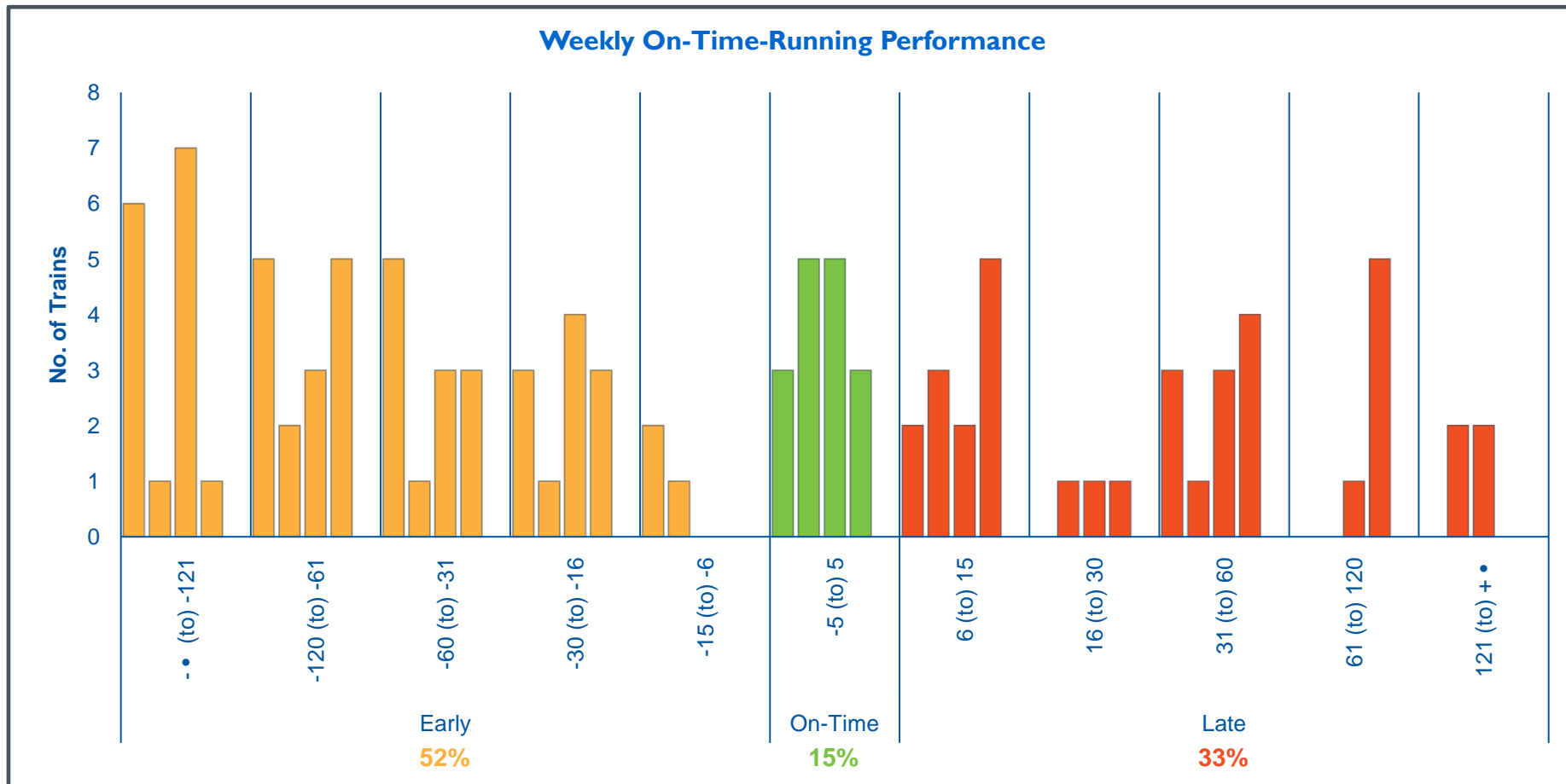
OUT-BOUND

REPORT 2.A	REPORT 2.B	REPORT 2.C	REPORT 2.D	REPORT 2.E	REPORT 2.F
Stevedores - Departures for Botany Yard	Botany Yard - Departures for Regional IMTs	Botany Yard - Departures for Metropolitan IMTs	Metropolitan IMTs - Arrivals	Regional Borders - Arrivals	Regional IMTs - Arrivals
Early 50%	Early 38%	Early 52%	Early 57%	Early 29%	Early 39%
On-Time 7%	On-Time 3%	On-Time 9%	On-Time 10%	On-Time 16%	On-Time 12%
Late 43%	Late 59%	Late 39%	Late 33%	Late 55%	Late 49%
					

		----- Week -----							
MAR 2010	Range (Minutes)	01/03 - 07/03	08/03 - 14/03	15/03 - 21/03	22/03 - 28/03		TOTAL MONTH	Proportion	By Status
Early	- • to -121	5	1	4	1		11	10%	33%
	-120 to -61			4			4	4%	
	-60 to -31	4		1	1		6	6%	
	-30 to -16	2	3	3			8	7%	
	-15 to -6	2		2	3		7	6%	
On-Time	-5 to 5	11	8	7	10		36	33%	33%
Late	6 to 15	1	1	3	2		7	6%	34%
	16 to 30	3	3	1	3		10	9%	
	31 to 60		1	2	4		7	6%	
	61 to 120	2		4	6		12	11%	
	121 to + •		1				1	1%	
Other	Cancelled								
	Unspecified								
TOTAL - ALL TRAINS*		30	18	31	30		109	100%	100%



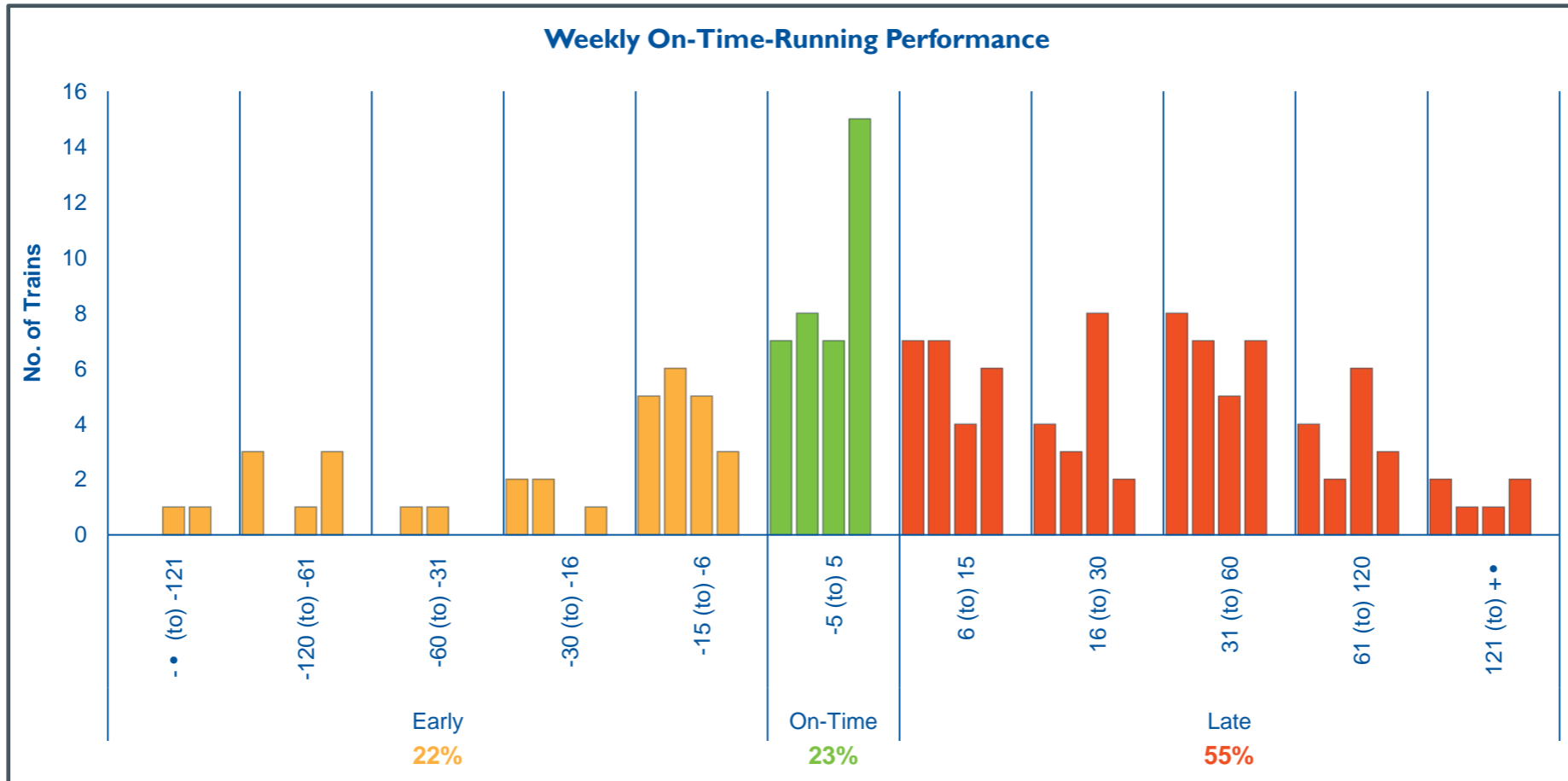
		----- Week -----							
MAR 2010	Range (Minutes)	01/03 - 07/03	08/03 - 14/03	15/03 - 21/03	22/03 - 28/03		TOTAL MONTH	Proportion	By Status
Early	- • to -121	6	1	7	1		15	14%	52%
	-120 to -61	5	2	3	5		15	14%	
	-60 to -31	5	1	3	3		12	11%	
	-30 to -16	3	1	4	3		11	10%	
	-15 to -6	2	1				3	3%	
On-Time	-5 to 5	3	5	5	3		16	15%	15%
Late	6 to 15	2	3	2	5		12	11%	33%
	16 to 30		1	1	1		3	3%	
	31 to 60	3	1	3	4		11	10%	
	61 to 120			1	5		6	6%	
	121 to + •		2	2			4	4%	
Other	Cancelled								
	Unspecified								
TOTAL - ALL TRAINS*		29	18	31	30		108	100%	100%



----- Week -----

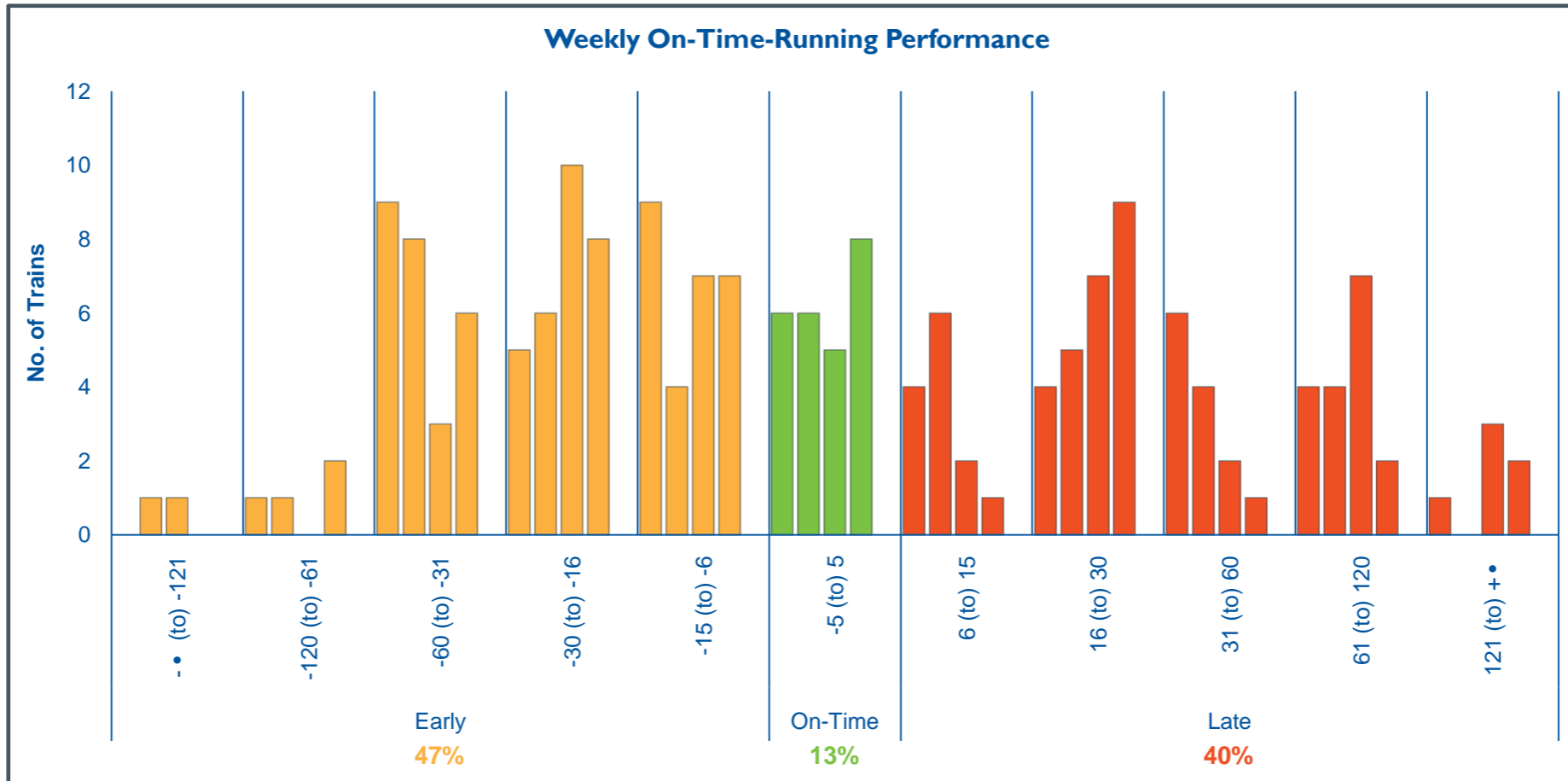
MAR 2010	Range (Minutes)	01/03 - 07/03	08/03 - 14/03	15/03 - 21/03	22/03 - 28/03		TOTAL MONTH	Proportion	By Status
Early	- • to -121			1	1		2	1%	22%
	-120 to -61	3		1	3		7	4%	
	-60 to -31		1	1			2	1%	
	-30 to -16	2	2		1		5	3%	
	-15 to -6	5	6	5	3		19	12%	
On-Time	-5 to 5	7	8	7	15		37	23%	23%
Late	6 to 15	7	7	4	6		24	15%	55%
	16 to 30	4	3	8	2		17	11%	
	31 to 60	8	7	5	7		27	17%	
	61 to 120	4	2	6	3		15	9%	
	121 to + •	2	1	1	2		6	4%	
Other	Cancelled								
	Unspecified								
TOTAL - ALL TRAINS*		42	37	39	43		161	100%	100%

Weekly On-Time-Running Performance



----- Week -----

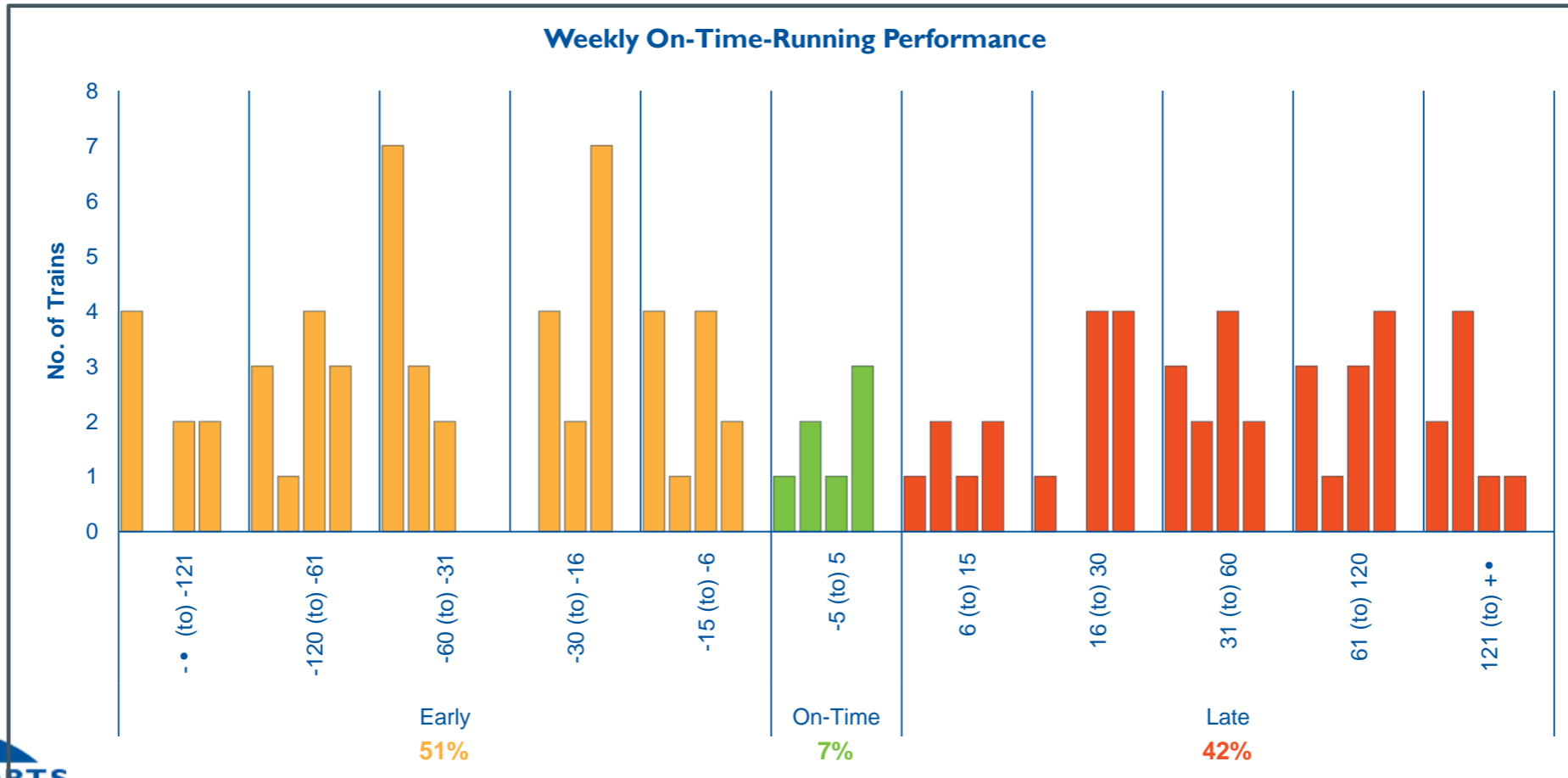
MAR 2010	Range (Minutes)	01/03 - 07/03	08/03 - 14/03	15/03 - 21/03	22/03 - 28/03		TOTAL MONTH	Proportion	By Status
Early	- • to -121		1	1			2	1%	47%
	-120 to -61	1	1		2		4	2%	
	-60 to -31	9	8	3	6		26	14%	
	-30 to -16	5	6	10	8		29	16%	
	-15 to -6	9	4	7	7		27	14%	
On-Time	-5 to 5	6	6	5	8		25	13%	13%
Late	6 to 15	4	6	2	1		13	7%	40%
	16 to 30	4	5	7	9		25	13%	
	31 to 60	6	4	2	1		13	7%	
	61 to 120	4	4	7	2		17	9%	
	121 to + •	1		3	2		6	3%	
Other	Cancelled								
	Unspecified								
TOTAL - ALL TRAINS*		49	45	47	46		187	100%	100%



----- Week -----

MAR 2010	Range (Minutes)	01/03 - 07/03	08/03 - 14/03	15/03 - 21/03	22/03 - 28/03	TOTAL MONTH	Proportion	By Status
Early	- • to -121	4		2	2	8	7%	51%
	-120 to -61	3	1	4	3	11	10%	
	-60 to -31	7	3	2		12	11%	
	-30 to -16		4	2	7	13	12%	
	-15 to -6	4	1	4	2	11	10%	
On-Time	-5 to 5	1	2	1	3	7	7%	7%
Late	6 to 15	1	2	1	2	6	6%	42%
	16 to 30	1		4	4	9	8%	
	31 to 60	3	2	4	2	11	10%	
	61 to 120	3	1	3	4	11	10%	
	121 to + •	2	4	1	1	8	7%	
Other	Cancelled							
	Unspecified							
TOTAL - ALL TRAINS*		29	20	28	30	107	100%	100%

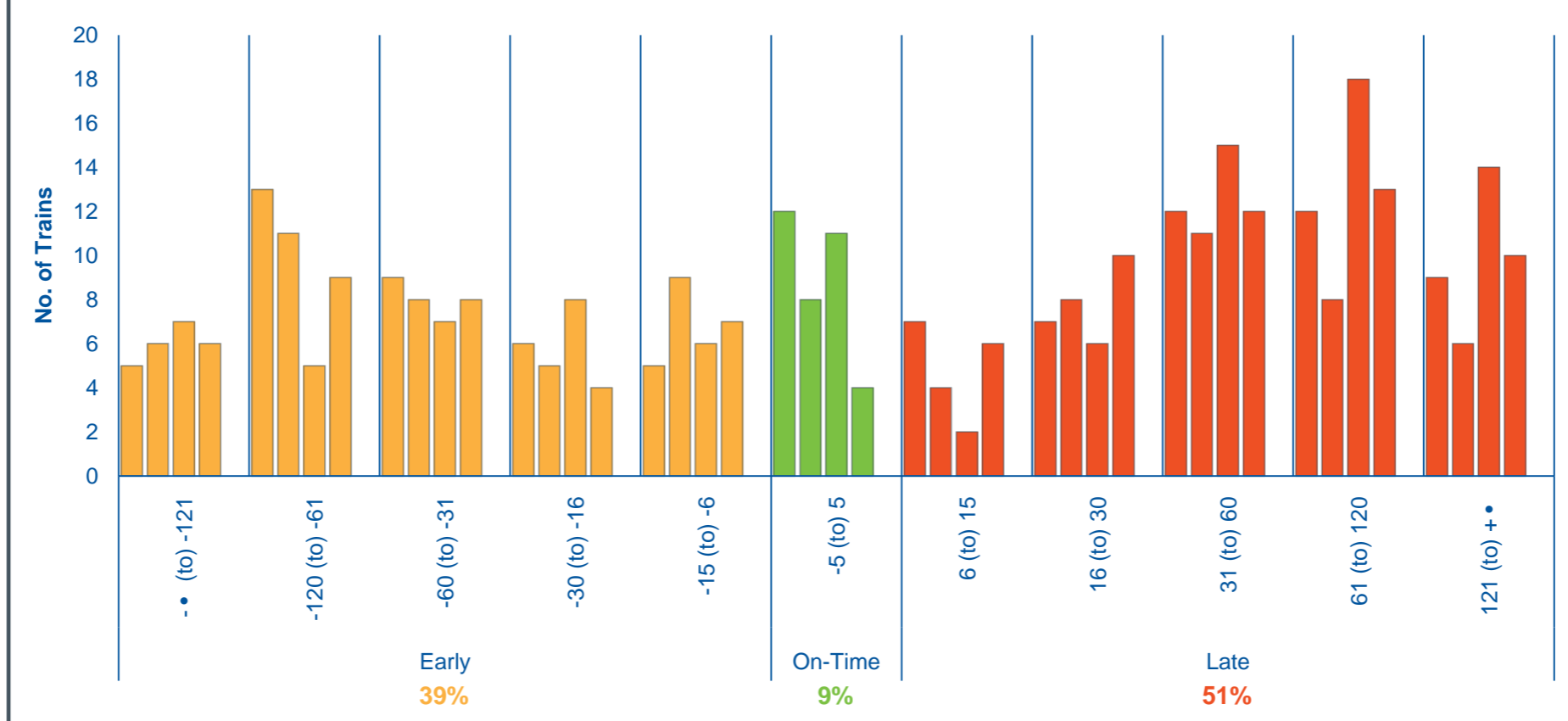
Weekly On-Time-Running Performance



----- Week -----

MAR 2010	Range (Minutes)	01/03 - 07/03	08/03 - 14/03	15/03 - 21/03	22/03 - 28/03		TOTAL MONTH	Proportion	By Status
Early	- • to -121	5	6	7	6		24	7%	39%
	-120 to -61	13	11	5	9		38	10%	
	-60 to -31	9	8	7	8		32	9%	
	-30 to -16	6	5	8	4		23	6%	
	-15 to -6	5	9	6	7		27	7%	
On-Time	-5 to 5	12	8	11	4		35	9%	9%
Late	6 to 15	7	4	2	6		19	5%	51%
	16 to 30	7	8	6	10		31	8%	
	31 to 60	12	11	15	12		50	14%	
	61 to 120	12	8	18	13		51	14%	
	121 to + •	9	6	14	10		39	11%	
Other	Cancelled								
	Unspecified								
TOTAL - ALL TRAINS*		97	84	99	89		369	100%	100%

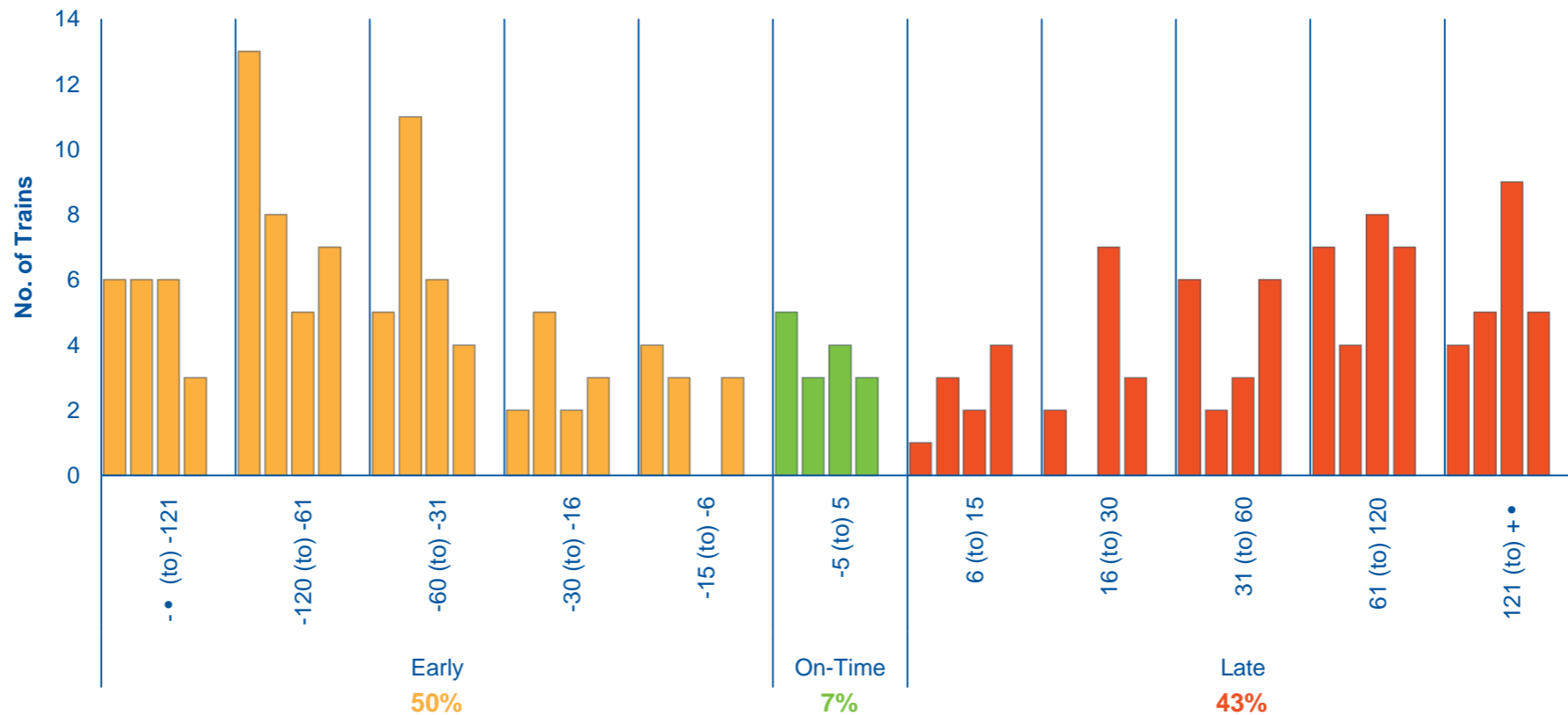
Weekly On-Time-Running Performance



----- Week -----

MAR 2010	Range (Minutes)	01/03 - 07/03	08/03 - 14/03	15/03 - 21/03	22/03 - 28/03		TOTAL MONTH	Proportion	By Status
Early	- • to -121	6	6	6	3		21	10%	50%
	-120 to -61	13	8	5	7		33	16%	
	-60 to -31	5	11	6	4		26	13%	
	-30 to -16	2	5	2	3		12	6%	
	-15 to -6	4	3		3		10	5%	
On-Time	-5 to 5	5	3	4	3		15	7%	7%
Late	6 to 15	1	3	2	4		10	5%	43%
	16 to 30	2		7	3		12	6%	
	31 to 60	6	2	3	6		17	8%	
	61 to 120	7	4	8	7		26	13%	
	121 to + •	4	5	9	5		23	11%	
Other	Cancelled								
	Unspecified								
TOTAL - ALL TRAINS*		55	50	52	48		205	100%	100%

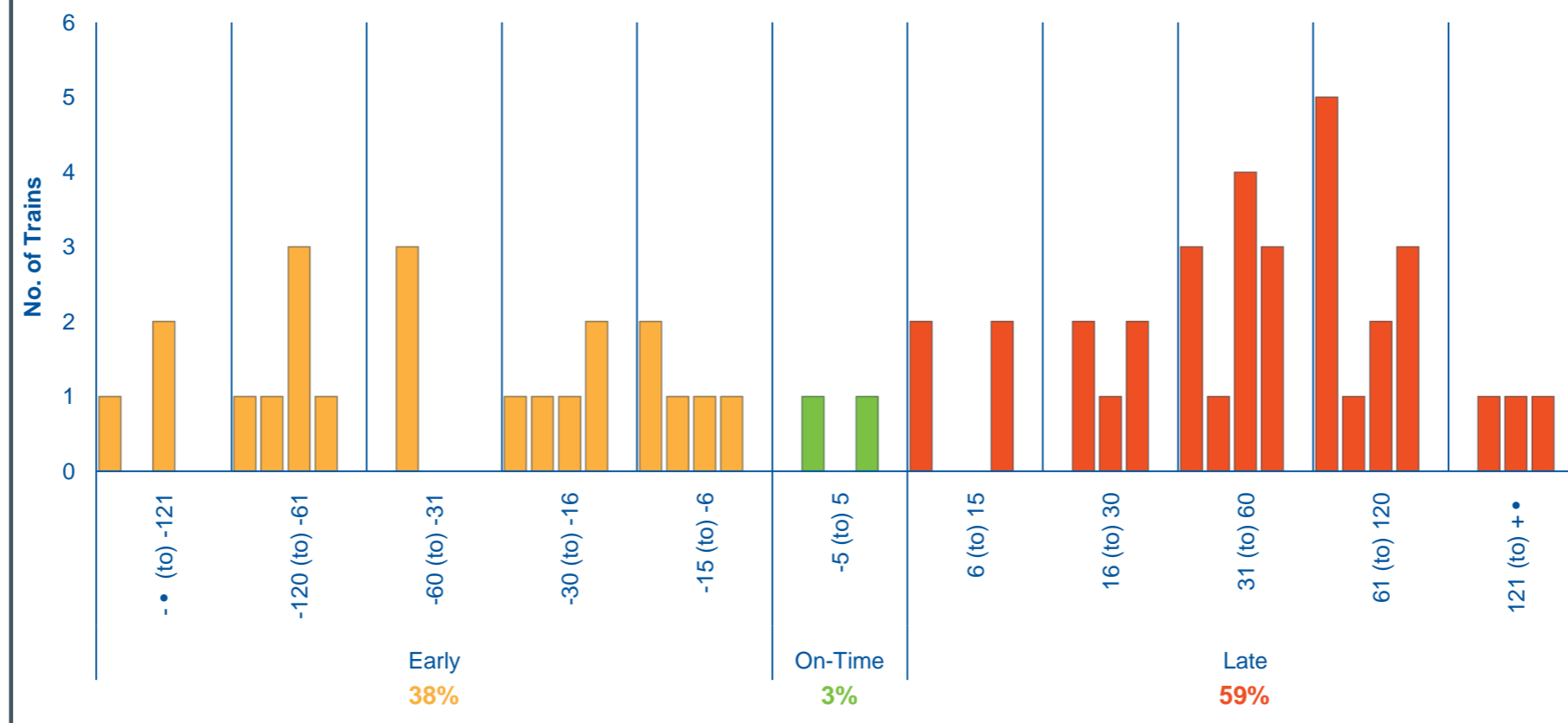
Weekly On-Time-Running Performance



----- Week -----

MAR 2010	Range (Minutes)	01/03 - 07/03	08/03 - 14/03	15/03 - 21/03	22/03 - 28/03		TOTAL MONTH	Proportion	By Status
Early	- • to -121	1		2			3	5%	38%
	-120 to -61	1	1	3	1		6	10%	
	-60 to -31		3				3	5%	
	-30 to -16	1	1	1	2		5	9%	
	-15 to -6	2	1	1	1		5	9%	
On-Time	-5 to 5		1		1		2	3%	3%
Late	6 to 15	2			2		4	7%	59%
	16 to 30		2	1	2		5	9%	
	31 to 60	3	1	4	3		11	19%	
	61 to 120	5	1	2	3		11	19%	
	121 to + •		1	1	1		3	5%	
Other	Cancelled								
	Unspecified								
TOTAL - ALL TRAINS*		15	12	15	16		58	100%	100%

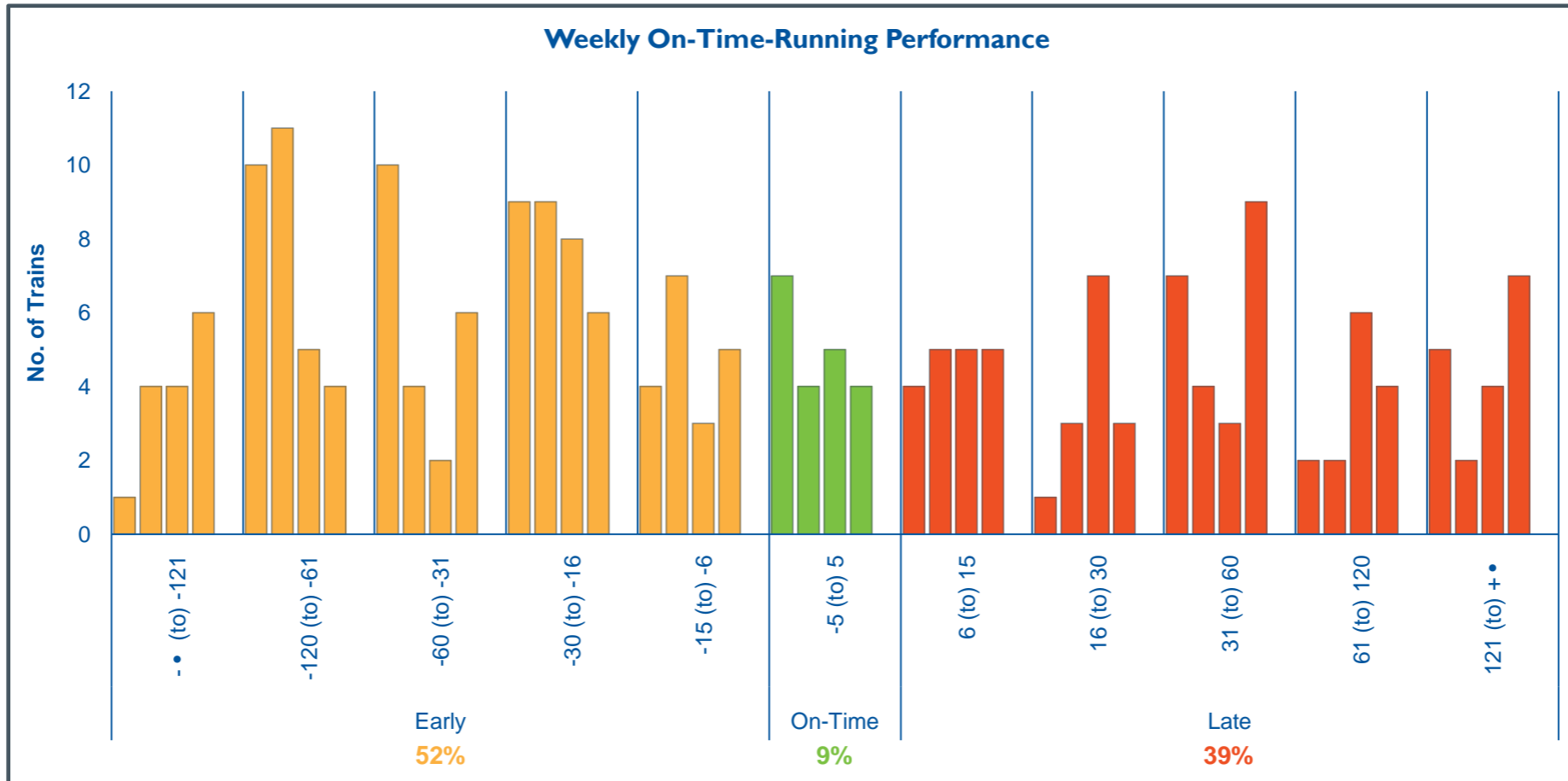
Weekly On-Time-Running Performance



----- Week -----

MAR 2010	Range (Minutes)	01/03 - 07/03	08/03 - 14/03	15/03 - 21/03	22/03 - 28/03		TOTAL MONTH	Proportion	By Status
Early	- • to -121	1	4	4	6		15	7%	52%
	-120 to -61	10	11	5	4		30	13%	
	-60 to -31	10	4	2	6		22	10%	
	-30 to -16	9	9	8	6		32	14%	
	-15 to -6	4	7	3	5		19	8%	
On-Time	-5 to 5	7	4	5	4		20	9%	9%
Late	6 to 15	4	5	5	5		19	8%	39%
	16 to 30	1	3	7	3		14	6%	
	31 to 60	7	4	3	9		23	10%	
	61 to 120	2	2	6	4		14	6%	
	121 to + •	5	2	4	7		18	8%	
Other	Cancelled								
	Unspecified								
TOTAL - ALL TRAINS*		60	55	52	59		226	100%	100%

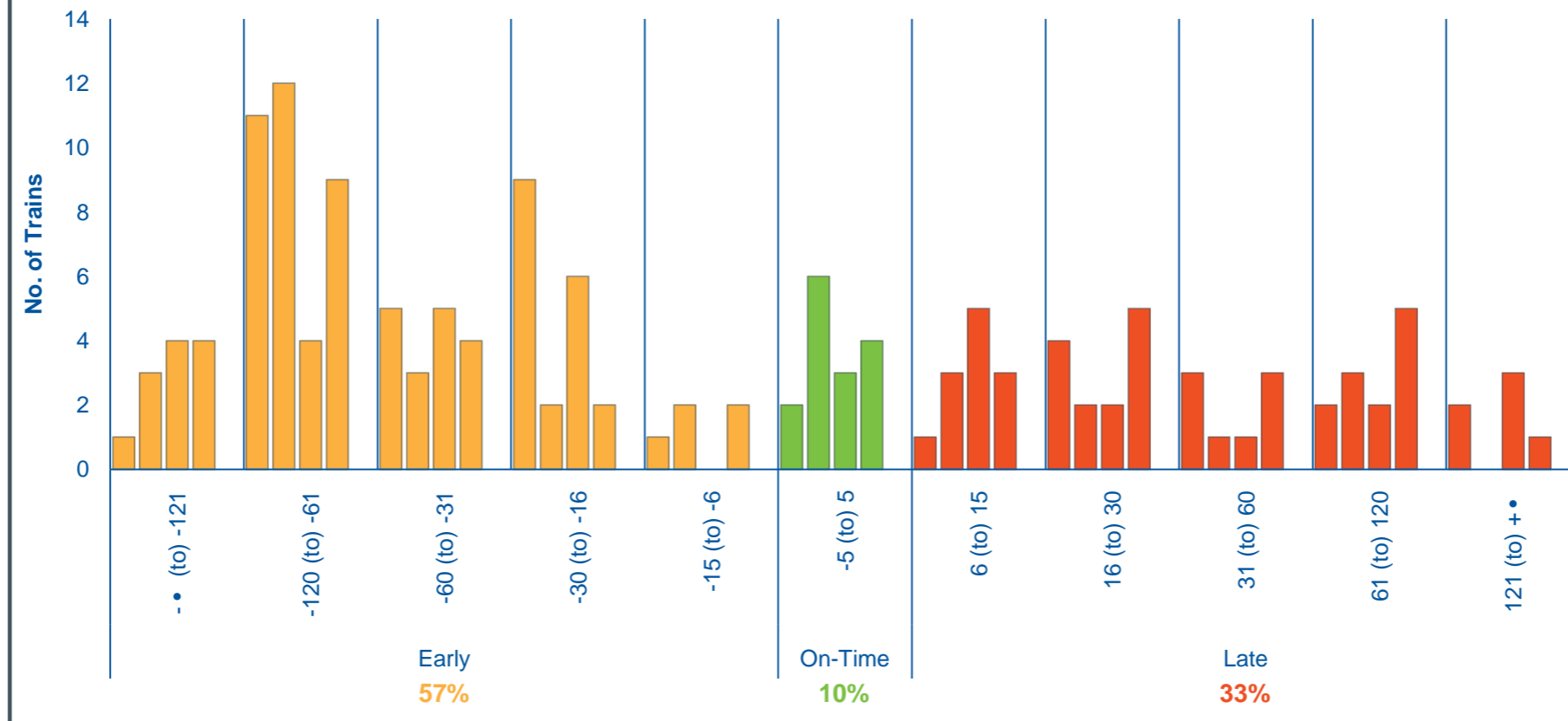
Weekly On-Time-Running Performance



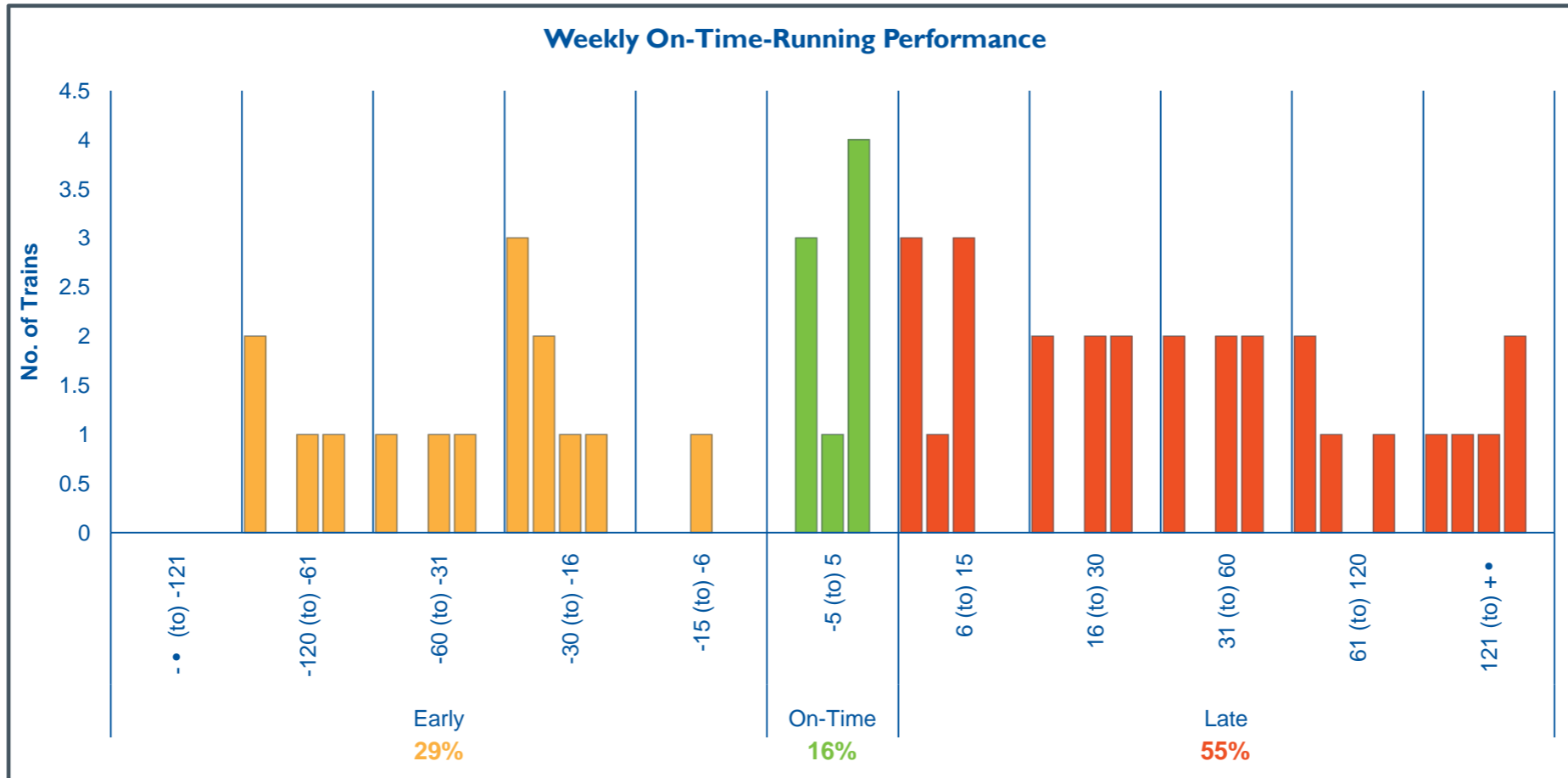
----- Week -----

MAR 2010	Range (Minutes)	01/03 - 07/03	08/03 - 14/03	15/03 - 21/03	22/03 - 28/03		TOTAL MONTH	Proportion	By Status
Early	- • to -121	1	3	4	4		12	8%	57%
	-120 to -61	11	12	4	9		36	23%	
	-60 to -31	5	3	5	4		17	11%	
	-30 to -16	9	2	6	2		19	12%	
	-15 to -6	1	2		2		5	3%	
On-Time	-5 to 5	2	6	3	4		15	10%	10%
Late	6 to 15	1	3	5	3		12	8%	33%
	16 to 30	4	2	2	5		13	8%	
	31 to 60	3	1	1	3		8	5%	
	61 to 120	2	3	2	5		12	8%	
	121 to + •	2		3	1		6	4%	
Other	Cancelled								
	Unspecified								
TOTAL - ALL TRAINS*		41	37	35	42		155	100%	100%

Weekly On-Time-Running Performance



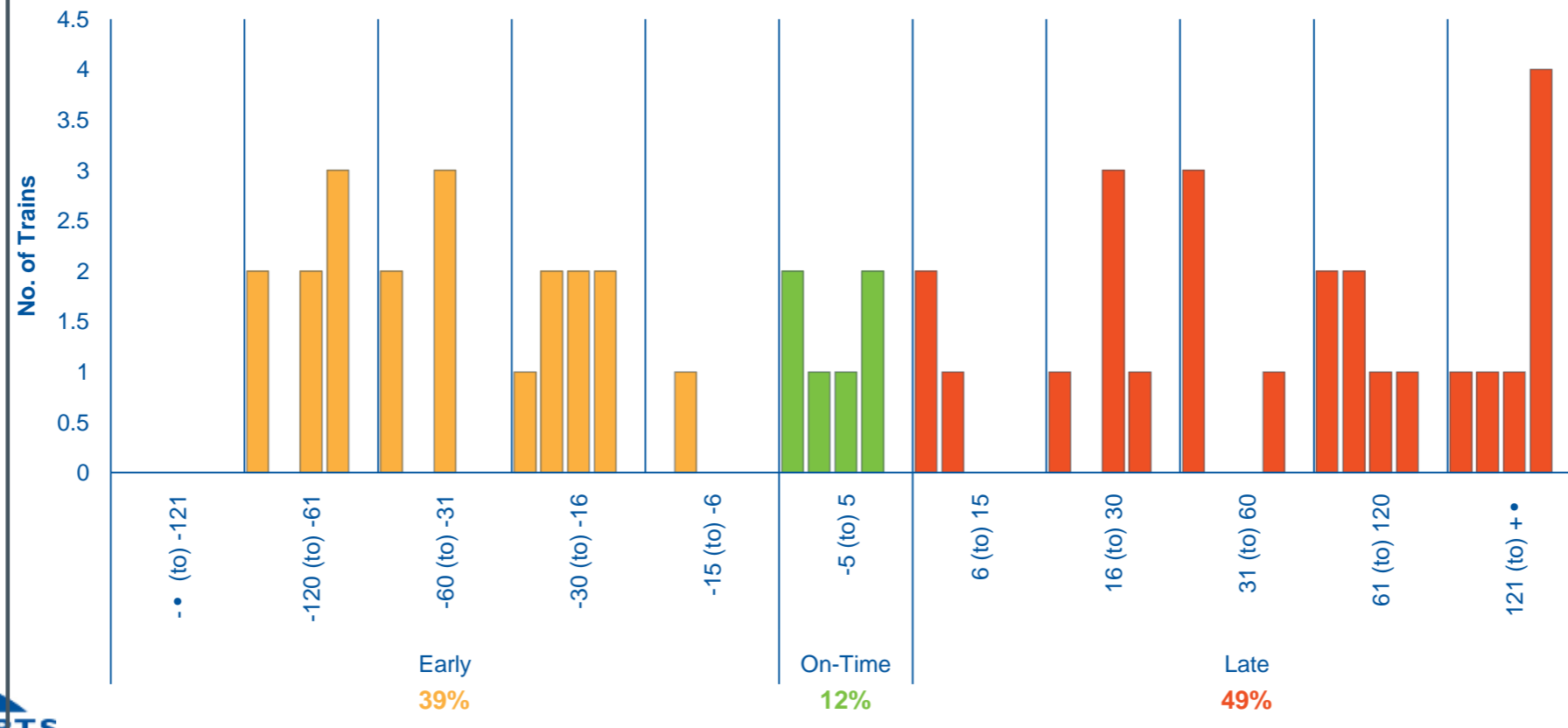
		----- Week -----							
MAR 2010	Range (Minutes)	01/03 - 07/03	08/03 - 14/03	15/03 - 21/03	22/03 - 28/03		TOTAL MONTH	Proportion	By Status
Early	- • to -121								29%
	-120 to -61	2		1	1		4	8%	
	-60 to -31	1		1	1		3	6%	
	-30 to -16	3	2	1	1		7	14%	
	-15 to -6			1			1	2%	
On-Time	-5 to 5		3	1	4		8	16%	16%
Late	6 to 15	3	1	3			7	14%	55%
	16 to 30	2		2	2		6	12%	
	31 to 60	2		2	2		6	12%	
	61 to 120	2	1		1		4	8%	
	121 to + •	1	1	1	2		5	10%	
Other	Cancelled								
	Unspecified								
TOTAL - ALL TRAINS*		16	8	13	14		51	100%	100%



----- Week -----

MAR 2010	Range (Minutes)	01/03 - 07/03	08/03 - 14/03	15/03 - 21/03	22/03 - 28/03		TOTAL MONTH	Proportion	By Status
Early	- • to -121								39%
	-120 to -61	2		2	3		7	14%	
	-60 to -31	2		3			5	10%	
	-30 to -16	1	2	2	2		7	14%	
	-15 to -6		1				1	2%	
On-Time	-5 to 5	2	1	1	2		6	12%	12%
Late	6 to 15	2	1				3	6%	49%
	16 to 30	1		3	1		5	10%	
	31 to 60	3			1		4	8%	
	61 to 120	2	2	1	1		6	12%	
	121 to + •	1	1	1	4		7	14%	
Other	Cancelled								
	Unspecified								
TOTAL - ALL TRAINS*		16	8	13	14		51	100%	100%

Weekly On-Time-Running Performance



Further Information:

Port Botany Rail Team (PBRT) Members:

Company Name	Service Provider	Company Website
Sydney Ports	Ports Corporation	http://www.sydneyports.com.au/
Australian Rail Track Corporation (ARTC)	Rail Infrastructure & Network Manager	http://www.artc.com.au/
RailCorp	Rail Infrastructure & Network Manager	http://www.railcorp.info/
DP World	Port Botany Stevedore	http://www.dpworld.com.au/
Patricks	Port Botany Stevedore	http://www.patrick.com.au/
P&O Trans Australia	Rail Operator	http://www.pota.com.au/
Patrick Port Link	Rail Operator	http://www.patrick.com.au/index.php?id=65
Independent Rail	Rail Operator	http://www.mistrail.com/ir/index.htm
SouthSpur	Rail Operator	http://www.southspur.com/
Freightliner	Rail Operator	http://www.freightliner.co.uk/default.aspx?PageID=124

Other PBRT Reports:

Report Name	Sydney Ports Website Link
Rail Freight Landside Volumes	http://www.sydneyports.com.au/port_development/landside_improvement/performance_reports/port_rail_volumes
PBRT Minutes of Meetings	http://www.sydneyports.com.au/port_development/landside_improvement/rail_team

Questions & Feedback:

The PBRT team welcome any comments concerning rail performance reports, please send details of your enquiry to the following email address:

PBLISRail@sydneyports.com.au