

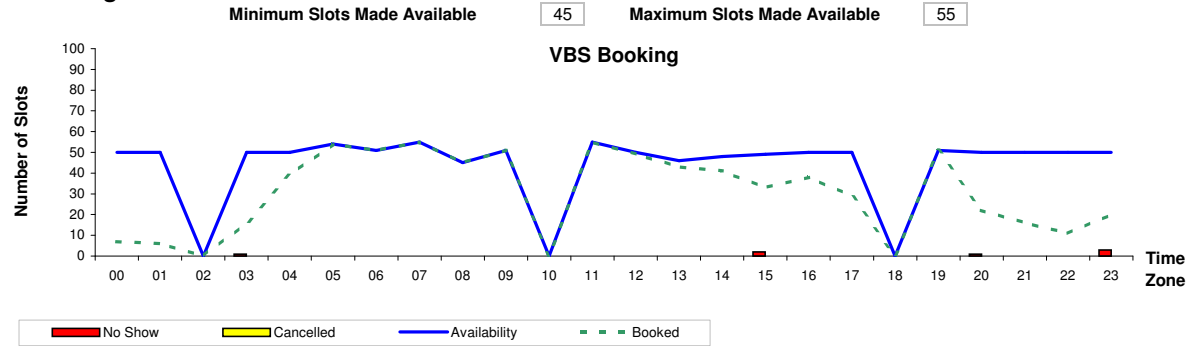


Daily Report - Port Botany

Terminal: DP World

Date: Friday 27/02/2009

1. VBS Slot Booking

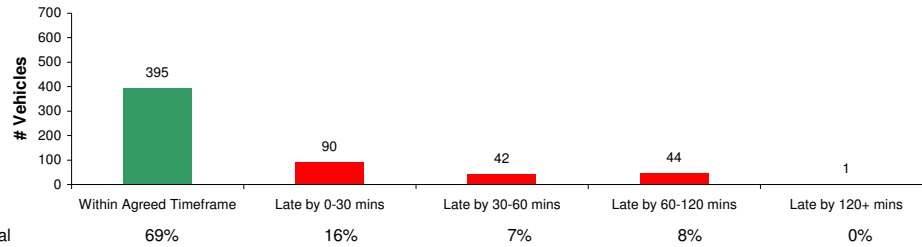


Time Slots	00	01	02	03	04	05	06	07	08	09	10	11	12	13	14	15	16	17	18	19	20	21	22	23	Total
Availability	50	50	0	50	50	54	51	55	45	51	0	55	50	46	48	49	50	50	0	51	50	50	50	50	1,055
Booked	7	6	0	16	39	54	51	55	45	51	0	55	49	43	41	33	38	29	0	51	22	16	11	20	732
No Show	0	0	0	1	0	0	0	0	0	0	0	0	0	0	0	2	0	0	0	0	1	0	0	3	7
Cancelled	0	0	0	0	0	0	0	0	0	0	0	0	0	0	0	0	0	0	0	0	0	0	0	0	0

69%
1%
0%

Peak (Orange) Shoulder (Yellow) Off-Peak (Green)

2a. Vehicle Processing Time



Total Processing Delay (minutes) Avg. Processing Delay (minutes)

Note:

- Vehicle processing time is measured from start of Queue (DPW: corner of Charlotte and Friendship road; Patrick: MSIC gate) to Out-Gate
- Agreed Timeframe is 60 minutes for 1st container and 15 minutes thereafter for each container. When a truck comes late (more than 30 minutes from the End of the booked Time Zone), agreed timeframe is 120 minutes

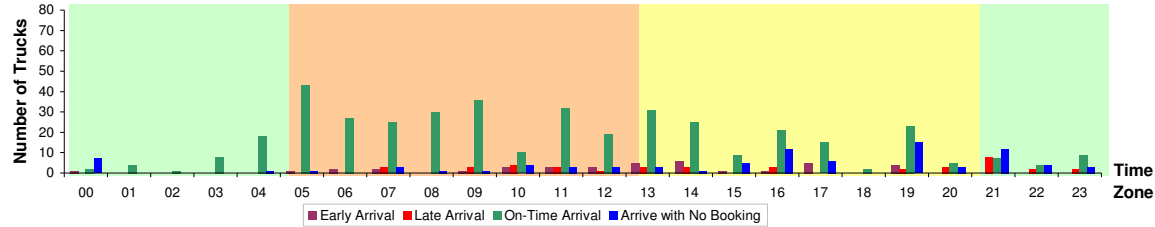


Daily Report - Port Botany

Terminal: DP World

Date: Friday 27/02/2009

2b. Carrier Performance



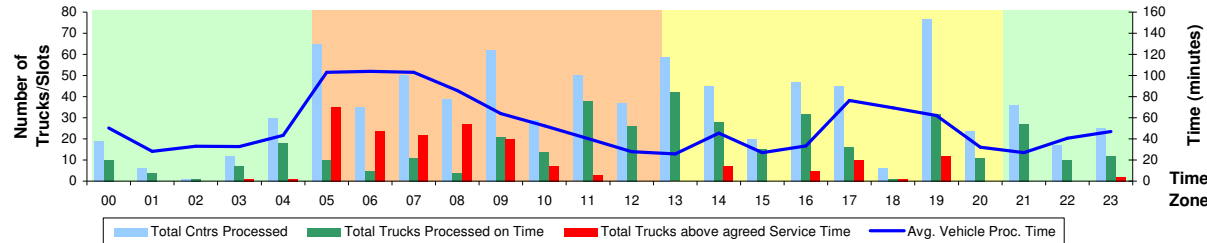
Time Slots	00	01	02	03	04	05	06	07	08	09	10	11	12	13	14	15	16	17	18	19	20	21	22	23	Total
Total Trucks Sampled	10	4	1	8	19	45	29	33	31	41	21	41	26	42	35	15	37	26	2	44	11	27	10	14	572
On-Time Arrival	2	4	1	8	18	43	27	25	30	36	10	32	19	31	25	9	21	15	2	23	5	7	4	9	406
Early Arrival	1	0	0	0	0	1	2	2	0	1	3	3	3	5	6	1	1	5	0	4	0	0	0	0	38
Late Arrival	0	0	0	0	0	0	0	3	0	3	4	3	1	3	3	0	3	0	0	2	3	8	2	2	40
Arrive with No Booking	7	0	0	0	1	1	0	3	1	1	4	3	3	3	1	5	12	6	0	15	3	12	4	3	88

trucks
71%
7%
7%
15%

Note:

- Early Arrival is defined as arrival at the Queue more than 30 minutes earlier than the Start of the booked Time Zone
- Late Arrival is defined as arrival at the Queue more than 30 minutes from the End of the booked Time Zone

2c. Terminal Performance



Time Slots	00	01	02	03	04	05	06	07	08	09	10	11	12	13	14	15	16	17	18	19	20	21	22	23	Total
Total Cntrs Processed	19	6	1	12	30	65	35	50	39	62	29	50	37	59	45	20	47	45	6	77	24	36	17	25	836
Avg. Vehicle Proc. Time	50	28	33	33	43	103	104	103	86	64	52	40	28	26	46	27	33	76	70	62	32	27	41	47	58.1 mins
Total Trucks Processed on Time	10	4	1	7	18	10	5	11	4	21	14	38	26	42	28	15	32	16	1	32	11	27	10	12	395
Total Trucks above agreed Service Time	0	0	0	1	1	35	24	22	27	20	7	3	0	0	7	0	5	10	1	12	0	0	0	2	177
Dual Slots	1	0	0	1	1	5	5	5	5	10	5	6	3	10	8	3	6	9	2	17	4	5	3	4	118

69%
31%
21%

Note:

- Dual Slot is defined as when a truck processes at least one export and one import containers in a single trip.



Daily Report - Port Botany

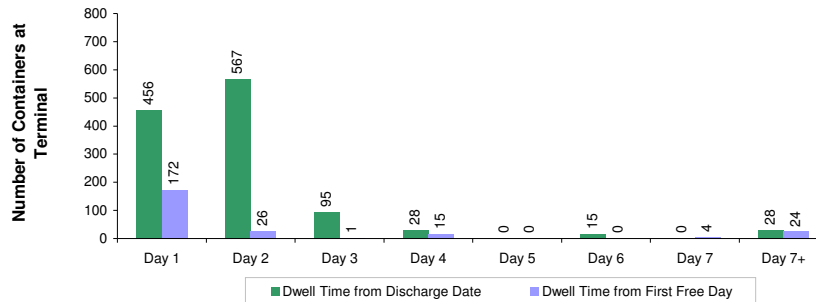
Terminal: DP World

Date: Friday 27/02/2009

2d. Vehicle Processing Time (Paperless vs Manual)

	Avg. Vehicle Processing Time from Queue to Out-Gate(TTT):	Avg. Elapsed Time from In-Gate to Out-Gate:
Avg. Vehicle Proc. Time	0:58	0:47
Avg. Vehicle Proc. Time - Paperless	1:00	0:52
Avg. Vehicle Proc. Time - Manual	0:57	0:45
Avg. Time Difference (Manual vs Paperless)	-3.1 minutes	Paperless (% Truck volume)
		30%

3. Import Container Dwell Time at Terminal



Total number of containers that stays beyond 3rd day of Free Storage 43

Note:

- Container Dwell Time is defined as the number of days that an import container stays at terminal after it is discharged from the vessel (or after it's First Day of Free Storage).
- For DP World, container data is based on containers that arrived in previous 60 days only.
- For Patrick, import container data include all containers that are still at the terminal.

Total Number of Containers at the Terminal 2,898 This includes all containers, including Exports, Imports, Empties etc

Disclaimer:

Whilst every effort has been made to ensure that information contained in this report is accurate, Sydney Ports Corporation gives no guarantee regarding this information and accepts no responsibility for any inconvenience, or any direct or consequential loss, arising from information disclosed herewith. Readers should undertake their own enquiries in relation to any of the facts referred to before acting on them.