

Transport for NSW

The Freight Challenge



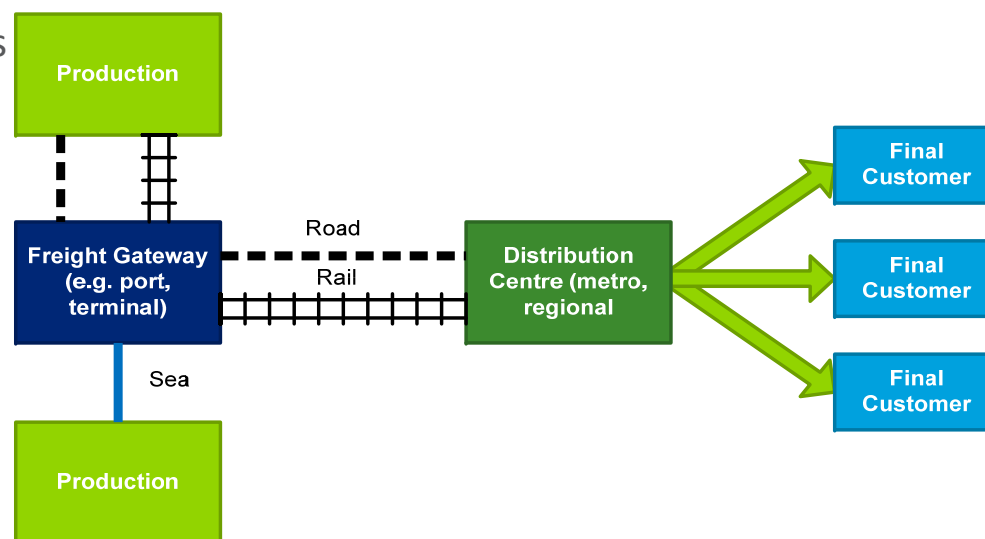
WHAT IS THE FREIGHT NETWORK?

- THE NETWORK IS A SYSTEM

- Multiple components
- Many linkages
- Interdependencies between elements
- Highly fragmented

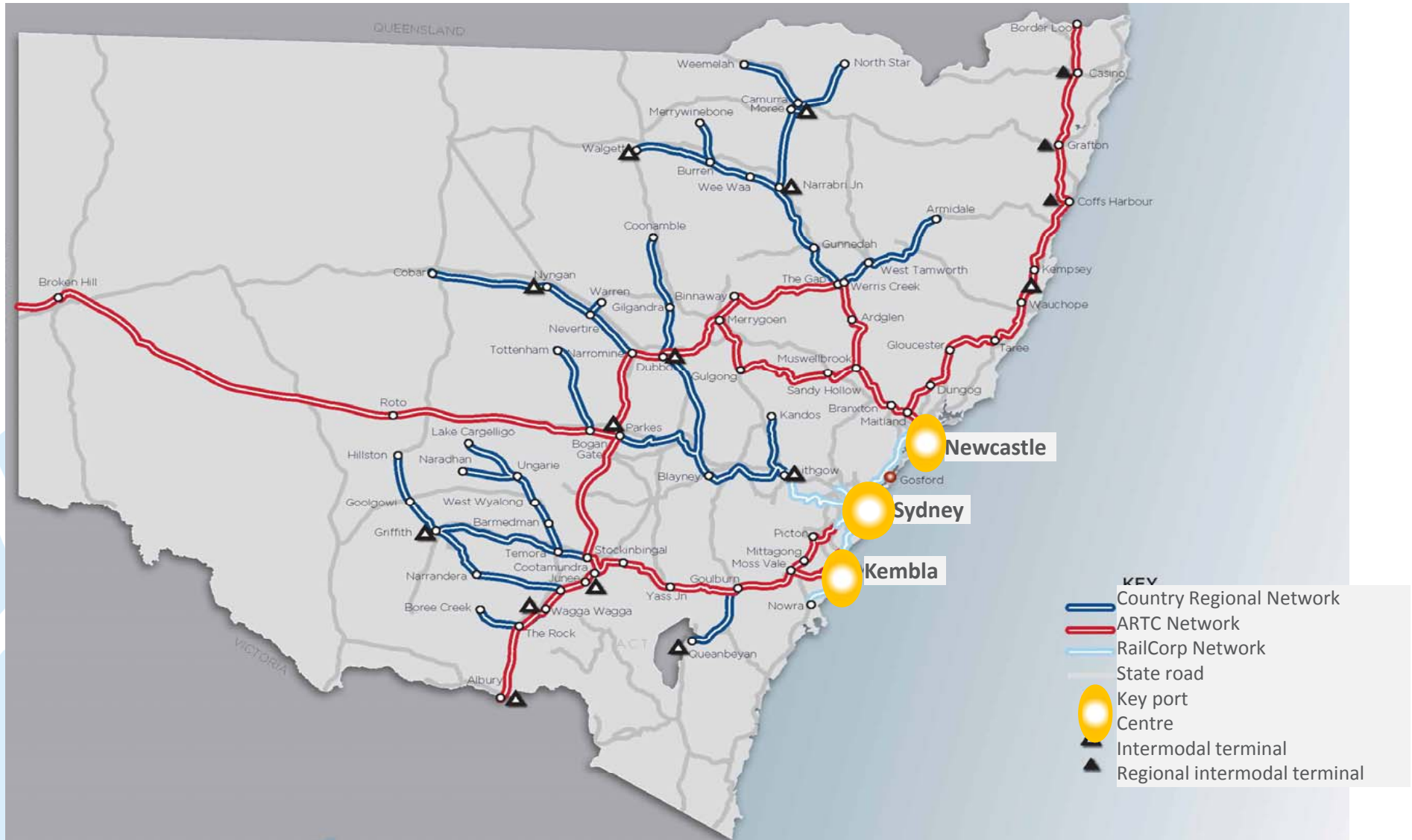
- MULTIPLE DIMENSIONS

- Infrastructure
- Transport operators
- Cargo owners
- Customers
- Regulators
- Community and other stakeholders
- Metropolitan, regional and rural differentiation



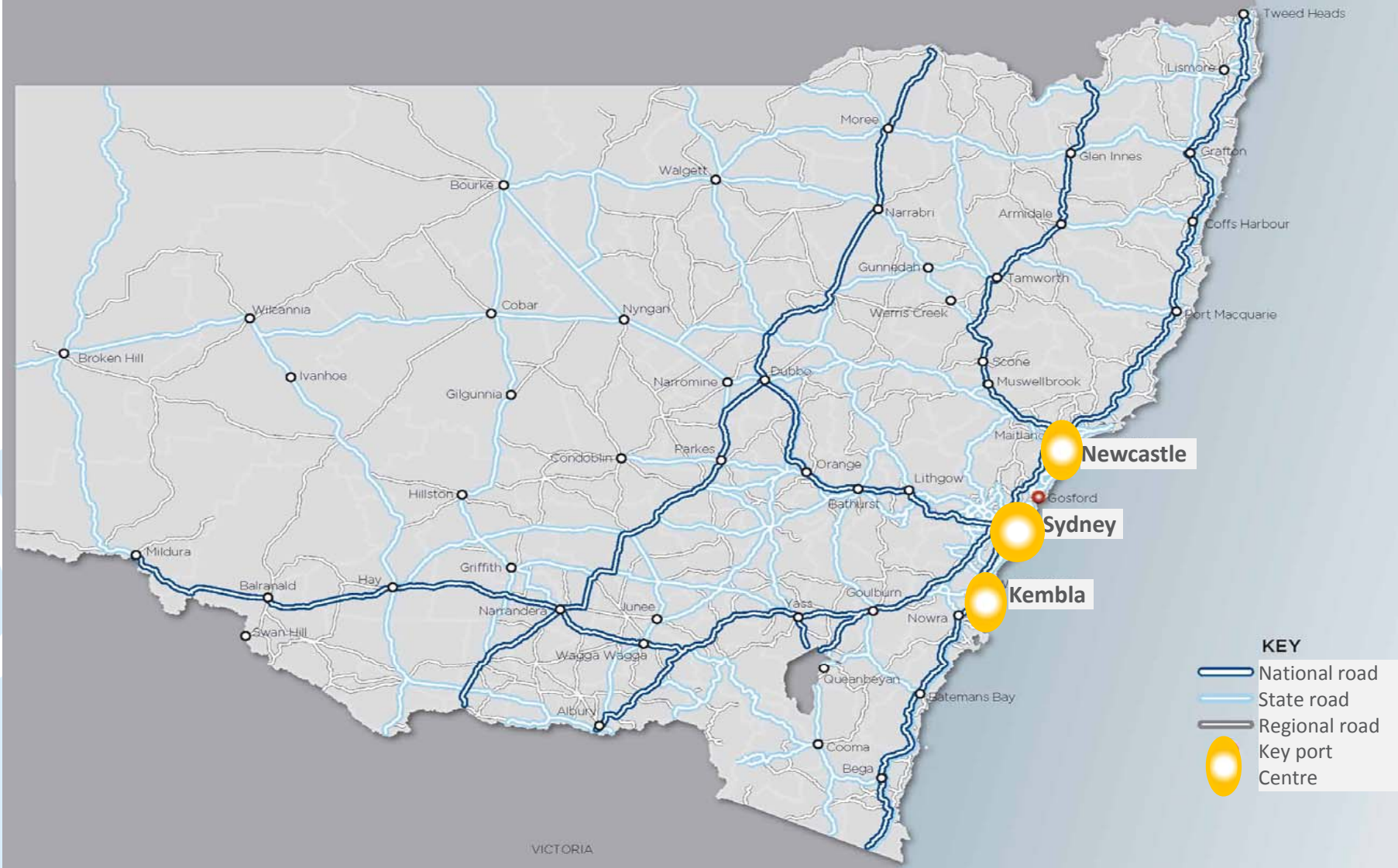
WHAT IS THE FREIGHT NETWORK?

REGIONAL FREIGHT RAIL NETWORK



WHAT IS THE FREIGHT NETWORK?

REGIONAL FREIGHT ROAD NETWORK



THE NSW FREIGHT TASK

THE NSW FREIGHT TASK IS REPRESENTED BY VARIOUS MAJOR FLOWS

MOVEMENTS WITHIN THE NSW

- Between major cities and regions
- Between regions
- Across metropolitan areas
- Examples of products include retail goods, primary produce and manufactured goods

INTERSTATE MOVEMENTS OF FREIGHT

- Between capital cities
- Between regional areas
- Products move by road, rail or sea and include manufactured goods and raw materials

EXPORT MOVEMENTS

- Moving from production facilities to the port of export
- They may move by road or rail
- Some products are containerised, some are break-bulk, e.g. steel and logs, whilst others such as coal and grain move in bulk

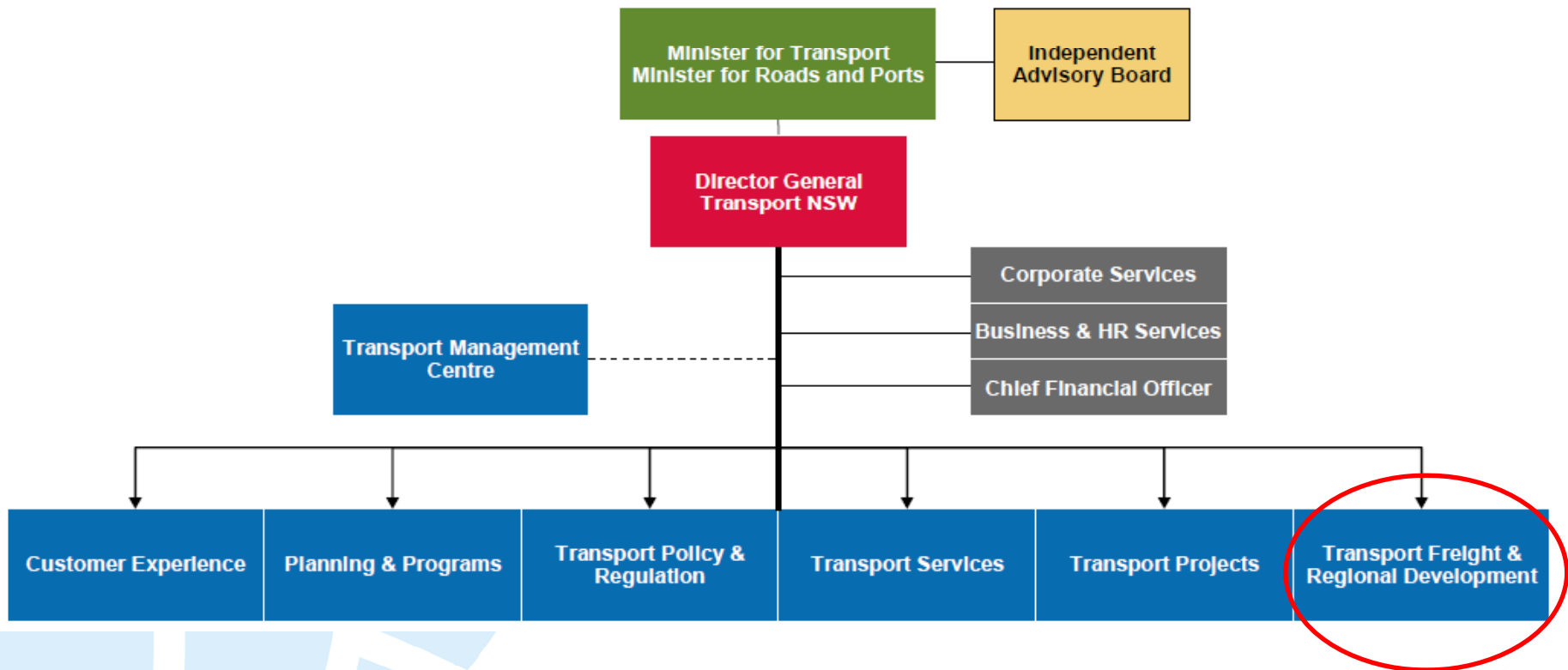
IMPORT MOVEMENTS

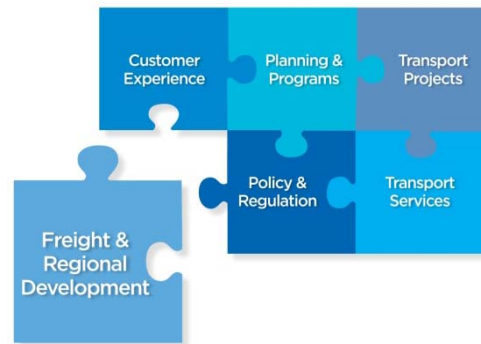
- Move from port or airport to distribution facilities or direct to customers
- Predominantly road, less than 20% on rail
- Major import commodities for NSW include fuel, chemicals, bulk sugar and construction materials and containerised imports

RESPONDING TO THE CHALLENGE

FOCUSING ON FREIGHT

The first step in responding to the challenge is the creation of a new Transport Freight & Regional Development Division within Transport for NSW





Our purpose

The Freight & Regional Development Division is a new division integrating freight strategies and programs to meet the current and future needs of the NSW economy and particularly regional economies.

Customer focus

Producer



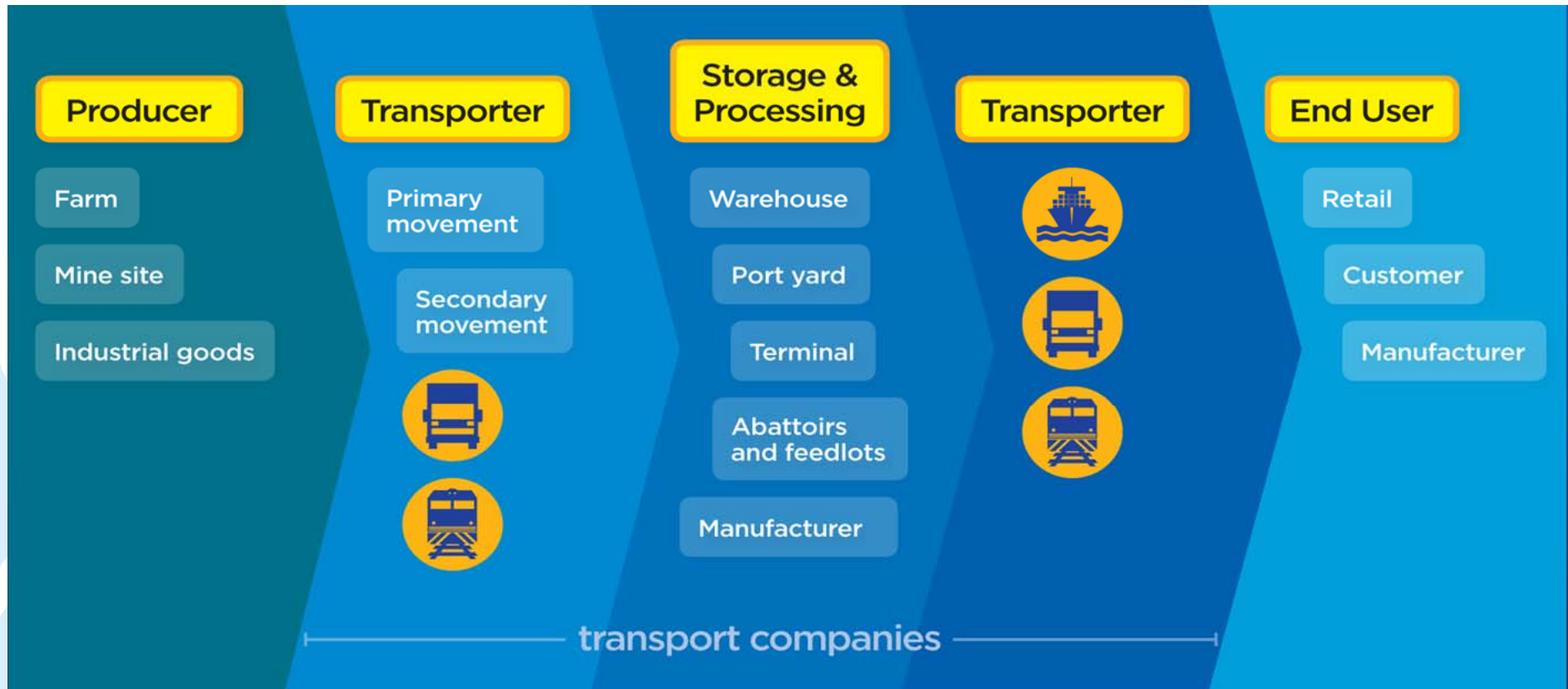
Transporter



Retail/Consumer

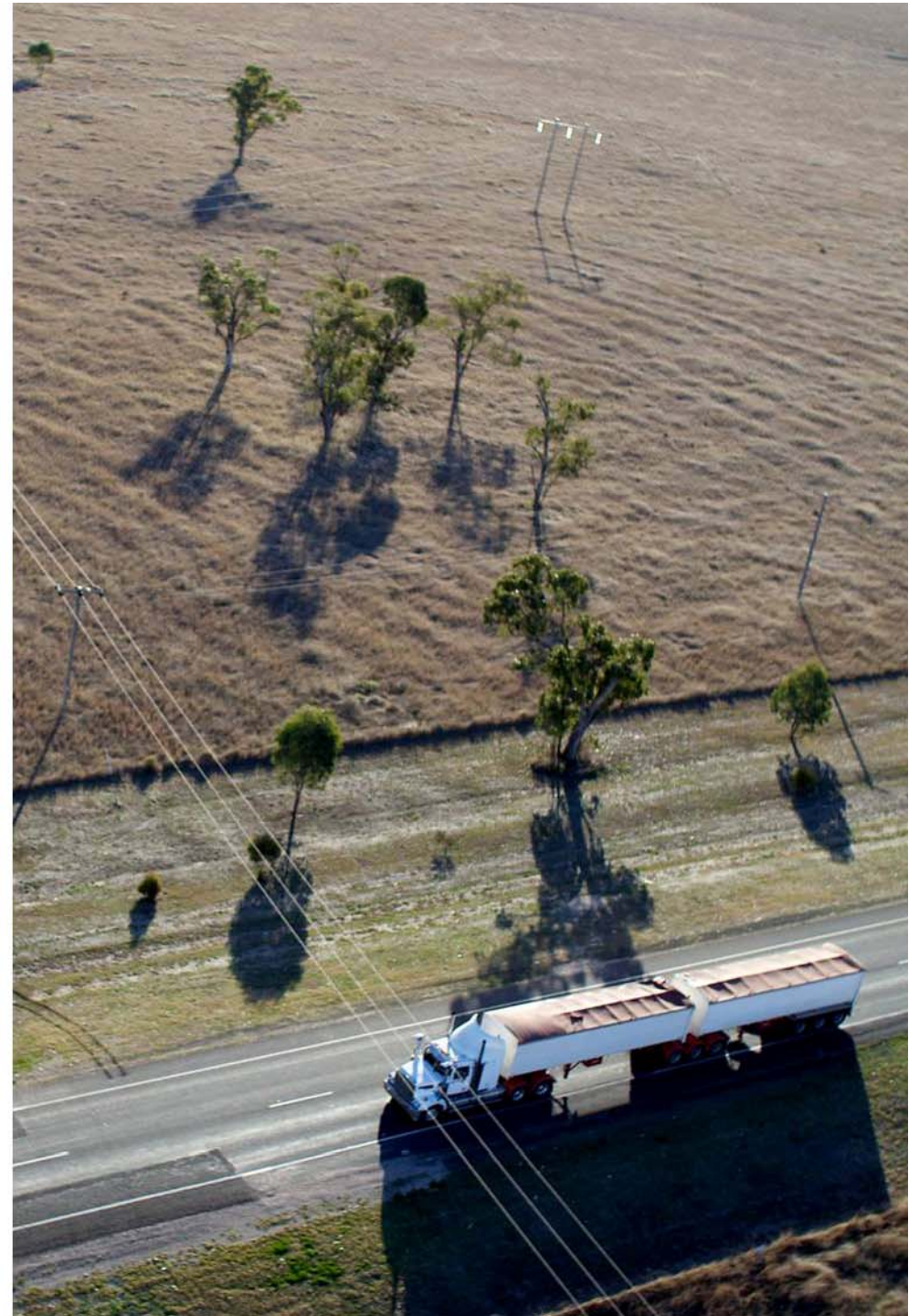


Focusing on the supply chain covers all freight customers



Regional development

Freight
infrastructure and
regulation to
support economic
activity.



Thank you

July, 2011