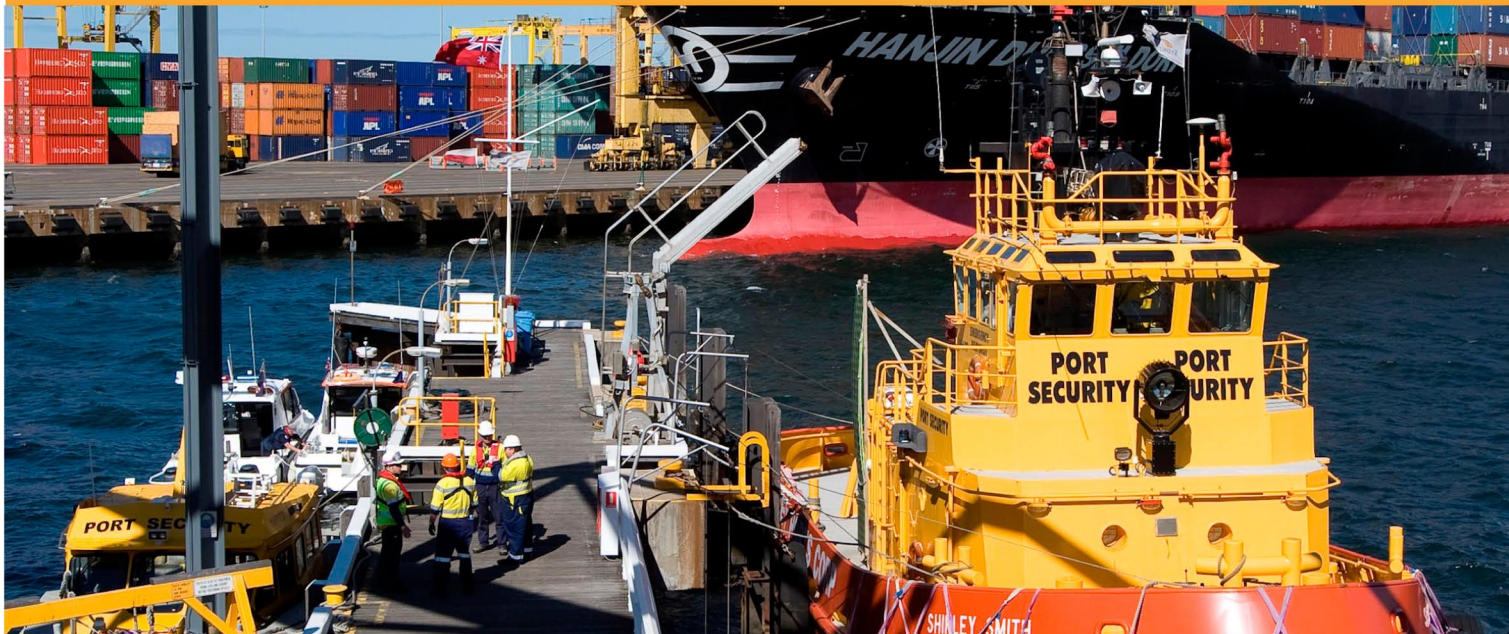


SYDNEY PORTS CORPORATION



Schedule of Port Charges for Sydney Harbour and Botany Bay

Effective 1 July 2011

Schedule of Port Charges

Effective 1 July 2011

Navigation service charge

All commercial vessels, including cargo and passenger vessels, piloted fishing vessels, research vessels and piloted tugs entering either Sydney Harbour or Botany Bay are required to pay a Navigation Service Charge.

The charge is payable by the vessel owner/agent and is based on vessel Gross Tonnage (GT) per port entry.

RATE PER GROSS TONNAGE PER PORT ENTRY	Rate excluding GST	GST	Rate including GST
Standard charge (excluding passenger, bulk liquid and gas)	\$0.4330	\$0.0433	\$0.4763
Standard charge for passenger, bulk liquid and gas carrier*	\$0.4830	\$0.0483	\$0.5313
Environmental services charge. Additional charge applicable to vessels transporting noxious bulk liquid, gas and oil cargos only	\$0.1669	\$0.0167	\$0.1836

One port approach

Vessels transiting between and within Sydney Harbour and Botany Bay will not be charged an additional Navigation Service Charge.

Passenger vessels

A 35 percent reduction in the standard Navigation Service Charge applies to passenger vessels.

Promotional visits

A 50 percent reduction in the standard Navigation Service Charge (but not the Environmental Services Charge) applies to vessels calling at Sydney for promotional purposes only (such as photographic work).

Non-cargo vessel operations

A 50 percent reduction in the standard charge applies to all vessels entering Sydney's ports exclusively for non-cargo operations such as maintenance and repair work.

Bunkering

A 75 percent reduction in the standard Navigation Service Charge (but not the Environmental Services Charge) applies to all vessels which call for bunkering purposes only.

*A security component of \$0.05 for cost recovery of maritime security imposed under the Commonwealth Maritime Transport and Offshore Facilities Security Act 2003 is included in standard charge for passenger and bulk liquid gas vessel.

Pilotage services

Effective from 1 July 2011

PILOTAGE IN / OUT	Rate excluding GST	GST	Rate including GST
Minimum Charge 1 to 4,000 GT	\$0.00	\$0.00	\$0.00
4,001 to 30,000 GT	\$0.0985 per GT	\$0.0099	\$0.1084
30,001 to 55,000 GT	\$0.0169 per GT	\$0.0017	\$0.0186
➤ 55,001 GT	\$0.0056 per GT	\$0.0006	\$0.0062

- [Refer to Pilotage Charges Calculator On the Website](#)

HARBOUR REMOVAL	Rate excluding GST	GST	Rate including GST
Minimum Charge 1 to 7,990 GT	\$0.00	\$0.00	\$0.00
7,991 to 29,223 GT	\$0.0492 per GT	\$0.0049	\$0.0541
Maximum Charge > 29,224 GT	\$1044.66	\$104.47	\$1149.13

- [Refer to Pilotage Charges Calculator On the Website](#)

ANCHORAGE IN / OUT	Rate excluding GST	GST	Rate including GST
Minimum Charge 1 to 7,990 GT	\$0.00	\$0.00	\$0.00
7,991 to 29,223 GT	\$0.0492 per GT	\$0.0049	\$0.0541
Maximum Charge > 29,224 GT	\$1044.66	\$104.47	\$1149.13

- [Refer to Pilotage Charges Calculator On the Website](#)

DEFERRAL INWARD	Rate excluding GST	GST	Rate including GST
Minimum Charge 1 to 15,981 GT	\$393.13	\$39.31	\$432.44
15,982 to 29,223 GT	\$0.0246 per GT	\$0.0025	\$0.0271
Maximum Charge > 29,224 GT	\$718.88	\$71.89	\$790.77

- [Refer to Pilotage Charges Calculator On the Website](#)

TYPE OF CHARGE	RATE		
	Excl. GST	GST	Incl. GST
Deferral Outward	\$163.05	\$16.31	\$179.36
Pilot Stays on Board (at Master's/Sydney Ports' request) Assisting Pilot on Board-Hourly rate	\$106.83	\$10.68	\$117.51
Master Audit Inward / Outward	\$1124.47	\$112.45	\$1236.92
Boarding Fee*	\$861.81	\$86.18	\$947.99
Boarding Fee-Master Audit	\$495.71	\$49.57	\$545.28

* For passenger vessels that require a pilot to board off Sydney Harbour rather than Botany Bay, a 50% premium will be applied to the boarding fee. GT – Gross Tonnage GST – Goods and Services Tax

Definition for Pilotage Charges

Pilotage

Pilotage is compulsory in the ports of Sydney Harbour and Botany Bay for all commercial shipping unless exempted by Part 6 of the Ports and Maritime Administration Act 1995. Pilotage charges apply to piloted vessel movements.

If a vessel transits from/to Sydney (Port Jackson) or from/to Botany two Pilotage charges apply regardless whether a pilot remained on board under any circumstances. An applicant attempting to obtain a Pilotage Exemption or with an expired certificate pays the full pilotage rate. However, the Master Audit fee will be applicable where an Exempt Master with a valid certificate is audited.

Harbour Removal

A harbour removal refers to a piloted movement from one berth to another berth within the same port.

Anchorage

An anchorage charge applies only to a piloted arrival to or a piloted departure from / to the following; Bank Anchorage 1 and Bank Anchorage 2. (berth codes: Bank1 and Bank2).

Deferral Inward

A Deferral Inward charge is applicable when an inward movement is delayed by circumstances that the vessel/master or agent could reasonably foresee. A Deferral Inward charge applies where a "booked and confirmed movement" is advised at late notice that the booking time is amended or cancelled. Late notice means within 2 hours of confirmed booking time.

A Deferral Inward charge will also be applicable if the vessel does not attend the pilot boarding ground within 30 minutes of the booked movement time and the pilot is delayed boarding.

Examples of Deferral Inward include; the vessel not attending the Pilot Boarding Ground at the confirmed booked time, or the booking time is amended at late notice by either the Master/Vessel or Agent.

No deferral charge shall apply if the change to an approved movement is initiated by Harbour Control or the change is a "knock on" effect from a delayed departure of another vessel at the nominated berth.

Deferral Outward

A Deferral Outward charge applies where a pilot has proceeded to or boards a vessel for a removal or departure, however the movement time is amended to a later time or cancelled. A Deferral Outward charge also applies where a departure booking time changes within 2 hours of the confirmed booking time. A Deferral Outward charge will also be

Applicable if the vessel is not ready to sail within 30 minutes of the booked movement time and the pilot is retained until departure.

No deferral charge shall apply if the change to an approved movement is initiated by Harbour Control or the change is a “knock on” effect from a delayed departure of another vessel at the nominated berth.

Pilot Stays on Board

Pilot stays on board charge applies where a pilot is requested or instructed to stay on board a vessel on any movement type (arrival, departure or removal). An hourly rate is applied.

The Pilot may be requested to “stay on board” in circumstances such as a specialised operation, compass swing, a hampered vessel, during times of adverse weather, engine failure or reduced capacity, if a vessel is not adequately secured or for purposes of safety.

If a Pilot is requested to remain on board beyond 30 minutes from the confirmed movement time then a Pilot Stays on Board charge may also be applicable.

The Pilot Stays on Board charge does not apply to any deferral.

A minimum charge of one hour will apply, where Pilot Stays on Board for less than an hour. For greater than one hour, charge is calculated to the nearest fifteen minutes.

Main Pilot

The “Main Pilot” is the allocated Pilot completing the movement and is recorded as the “main pilot” in ShIPS on the Actual Movement Screen. The charge for the pilotage is dependent on the movement type i.e. Pilotage In, Pilotage Out, Harbour Removal, Anchorage In or Anchorage Out.

Assisting Pilot

An “Assisting Pilot” may be allocated for specialised movements, vessels with restricted visibility and for movements into Kurnell 3. The “Assisting Pilot” is charged at the “Pilot Stays on Board” rate, and this charge does not apply to any deferral.

Master Audit

A Master Audit (inward or outward) charge applies when an Exempt Master requires a “check audit pilot” to assess their practical ship handling skills. Master Audits are for authorised movements only.

A Master Audit is not applicable on a Harbour Removal unless specifically approved by the Harbour Master during exceptional circumstances.

If an audited movement is delayed by 30 minutes or more then a Deferral Inward (arrival) or a Deferral outward (removal or departure) will be applied. Note: An applicant attempting to obtain a Pilotage Exemption or an Exempt Master without a valid certificate pays the full pilotage rate.

Boarding Fee

A Boarding Fee applies each time the “main pilot” boards the vessel. If an “assisting pilot” also boards then only one “Boarding fee” is applicable.

If a vessel transits from/to Sydney (Port Jackson) or from/to Botany two boarding fees apply regardless whether a pilot remained on board under any circumstances. The boarding fee does not apply to any deferral.

The Boarding Fee includes a fuel surcharge of \$25.00.

Wharfage charge

A combined Wharfage Charge and PCAC* is payable by the cargo owner, usually via the Shipping Agent. Containerised cargo is charged per Twenty Foot Equivalent Unit (TEU); non-containerised cargo is charged per Revenue Tonne. A Revenue Tonne is the greater of mass or volume of the cargo measured in units of tonnes, cubic metres, or kilolitres.

CONTAINERISED CARGO AND CARGO ON PLATFORMS Rate per Twenty Foot Equivalent Unit (TEUs)	Rate excluding GST	GST	Rate including GST
Overseas import	\$100.46	\$10.05	\$110.51
Overseas export	\$61.57	\$6.16	\$67.73
Local (coastal inwards or outwards)	\$33.33	\$3.33	\$36.66
Transshipment (inwards or outwards)	\$16.67	\$1.67	\$18.34
Empty container overseas	\$11.10	\$1.11	\$12.21
Empty platform overseas	\$2.77	\$0.28	\$3.05
NON-CONTAINERISED CARGO Rate per Revenue Tonne			
Dry bulk cargo	\$1.02	\$0.102	\$1.122
Overseas general cargo – import	\$2.05	\$0.205	\$2.255
Overseas general cargo – export	\$1.75	\$0.175	\$1.925
Transshipment and local general cargo (inwards or outwards)	\$1.00	\$0.10	\$1.10
Timber	\$1.45	\$0.145	\$1.595
Paper and timber products	\$1.75	\$0.175	\$1.925
Bulk liquids (Bulk Liquids Berth)	\$2.19	\$0.219	\$2.409

* Wharfage Charges apply to imports and exports. Wharfage Charges include Port Cargo Access Charge (PCAC), which represents a charge applied by, and remitted to, NSW Government to recoup government costs relating to the ports. Wharfage Charges also include a security component for cost recovery of maritime security imposed under the Commonwealth Maritime Transport and Offshore Facilities Security Act 2003.

Transshipment

Transhipped cargo is cargo unloaded from one vessel and re-loaded onto another vessel in Sydney Ports within 14 days from date of unloading. Transshipment charges for all cargoes are applicable to both the inward and outward trip.

Site occupation charge

The Site Occupation Charge is a time-based charge for use of the Sydney Ports' common user or non-leased berths. Certain berths are leased to private operators, who set and raise their own charges.

A Site Occupation Charge is payable for the time a vessel is alongside a berth or its cargo is on the berth, and for the embarkation or disembarkation of passengers. It is payable by the stevedore or occupier of the site. A minimum charge of one hour will apply for vessels occupying a site for less than an hour.

RATE PER VESSEL PER HOUR	Standard Rate excluding GST	GST	Rate including GST	Lay Up Rate excluding GST	GST	Rate including GST
Nos. 1, 2, 7 and 8 Glebe Island	\$100.00	\$10.00	\$110.00	\$30.00	\$3.00	\$33.00
Nos. 2 to 6 White Bay	\$100.00	\$10.00	\$110.00	\$30.00	\$3.00	\$33.00
Bulk liquids berth	\$313.80	\$31.38	\$345.18	\$65.37	\$6.54	\$71.91
Passenger terminals- Passenger vessels	\$250.00	\$25.00	\$275.00	\$100.00	\$10.00	\$110.00
Passenger terminals- Non-passenger vessels	\$100.00	\$10.00	\$110.00	\$30.00	\$3.00	\$33.00
Other berths- Passenger vessels	\$200.00	\$20.00	\$220.00	\$30.00	\$3.00	\$33.00
Fishing vessels	\$13.75	\$1.375	\$15.125	\$13.75	\$1.375	\$15.125
Small non-commercial vessels	\$30.00	\$3.00	\$33.00	-	-	-

Lay up rate

The Lay Up Rate applies to those vessels which are undergoing repairs, emergency maintenance, or which cannot otherwise carry out normal cargo transfer operations. Written notification must be provided to the Shipping Manager of the intention to use a berth for lay up purposes.

Mooring fee

The Mooring fee is a time-based charge applied to vessels secured to a buoy.

RATE PER VESSEL PER HOUR	Rate excluding GST	GST	Rate including GST
Buoy	\$30.00	\$3.00	\$33.00

Where a navigation light is removed and re-attached for vessels secured to a buoy, a Navigation Light Handling Fee will be applied.

RATE PER VESSEL PER USE	Rate excluding GST	GST	Rate including GST
Navigation Light Handling Fee	\$500.00	\$50.00	\$550.00

Payment Terms

Payment terms are 28 days from the Service date, being either arrival or departure date.

Other port services

Contact details for other port services providers are available from Sydney Ports' website www.sydneyports.com.au

Vessel bookings

Notification of vessel arrivals and bookings are to be made electronically through Sydney Ports' ShIPS system. Port service providers including pilots, towage operators, line handlers, and Sydney Ports accept and confirm the provision of services electronically through ShIPS. All booking enquiries and berth allocations should be directed to the Shipping Manager.

Terms of trade

Sydney Ports' invoices for charges referred to in this schedule are payable as below:

- **Navigation service charge** 28 days from the date of vessel arrival.
- **Site occupation charge** 28 days from the earliest of either the date of vessel's first line ashore or cargo arrival at berth.
- **Wharfage charge**
 - i) Inward cargo – 28 days from the date of vessel arrival.
 - ii) Outward cargo – 28 days from the date of vessel departure.

An incentive rebate for wharfage is payable to shipping agents who transmit manifests electronically to the Corporation and satisfy the above Terms of Trade.

Enquiries

SYDNEY PORTS' CONTACT DETAILS		Email	Telephone
Price enquiries	Trade and Commercial Analyst	mshimon@sydneyports.com.au	+61 2 9296 4791
Invoice enquiries	Manager Billing Systems-Revenue	revenueservices@sydneyports.com.au	+61 2 9296 4591
New business enquiries	Senior Manager Marketing	jmcgregor@sydneyports.com.au	+61 2 9296 4769
Vessel bookings (Mon – Fri: 8.30am to 4.30pm)	<i>SHIPS system</i> and Harbour Control	Visit: https://ships.sydneyports.com.au	+61 2 9296 4800 +61 2 9296 4000
Shipping enquiries (24 hours)	Shipping Manager	harbourcontrol@sydneyports.com.au	+61 2 9296 4800

About this schedule

This schedule is a summary of port charges applicable to the commercial use of Sydney's ports effective 1 July 2011. It does not contain all the regulations and procedures applicable to Sydney Ports' charges.

If you are unfamiliar with the regulations and procedures relating to the Schedule of Port Charges please contact the Trade and Commercial Analyst, Shipping Manager or Manager Billing Systems-Revenue.