

PORT BOTANY CONTAINER TERMINAL EXPANSION PROJECT

Questions & Answers

Changes to the navigation channel from Penrhyn Road boat ramp for recreational boat users (September 2008 – March 2010)

Q. Why does there need to be changes to the navigation channel?

- A. As part of the construction of a new five berth shipping facility, a special event area/construction zone was established in July 2008. This zone will remain in place for a period of approximately three (3) years.

This construction zone allows for reclamation of sands, dredging, and the subsequent construction of the new container terminal facility.

Q. How many diversions to the navigation channel will occur?

- A. There will be four (4) navigation channel diversions in total, three (3) temporary diversions and one final diversion. The first two (2) diversions are from the **existing boat ramp** at Penrhyn Road.

The third (3) temporary diversion will be from the **new boat ramp**, accessed from Foreshore Road which is due for completion in approximately October 2009.

The fourth and permanent diversion will be from the **new boat ramp** with permanent navigation markers installed.

Q. How will vessels operators navigate around the special event/construction zone?

- A. Vessel operators will use a defined 30 metre wide navigation channel for access to and from Penrhyn Road boat ramp.

Navigation aids (lateral marks – Port and Starboard buoys) will identify the navigation channel between Penrhyn Road boat ramp and access to Botany Bay (Stage 1 and Stage 2 diversions).

A continuous floating boom will also be installed to delineate the navigation channel.

A designated access gate for vessels entering Botany Bay or returning to Penrhyn Road boat ramp is located at the end of the third runway.

Q. What are the restrictions associated with the construction zones?

- A. All vessels including passive craft must use the designated navigation channel from Penrhyn Road boat ramp.

Please refer to NSW Maritime **Marine Notice SU0807** of July 2008

This notice requires that any vessel, must not enter the special event area/construction zone and are to keep well clear of any service craft, equipment and the actual construction area.

A vessel includes watercraft of any description used or capable of being used as a means of transportation on water.

The Marine Notice also stipulates that::

- All vessels are subject to a maximum speed limit of 8 knots within the navigation channel;
- No anchoring or drifting of recreational vessels is permitted within the navigation channel.
- All vessels must maintain a speed of no more than 4 knots within 100 metres of floating plant or works in progress.

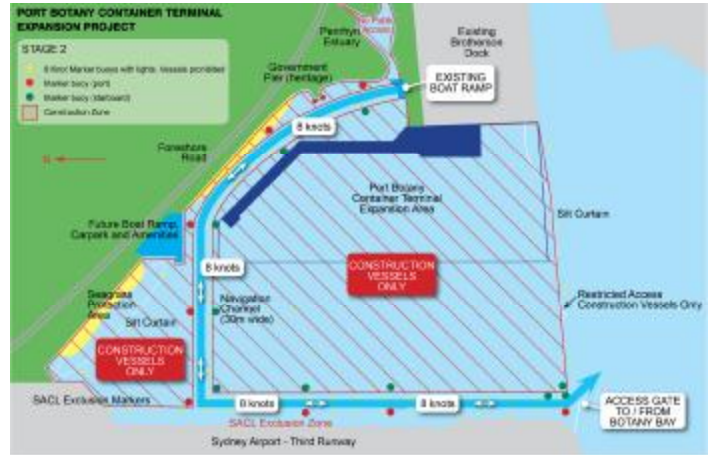
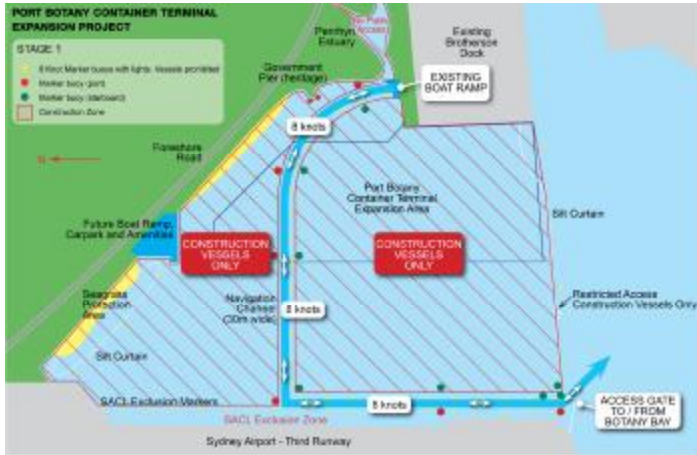
Q. Who monitors compliance to the navigation boating channel requirements? What are the penalties if you do not comply?

- A. Compliance to the Marine Notice is monitored by NSW Maritime. A breach of the Marine Legislation can attract a penalty of up to \$1500.

Q. Where are the navigation boating channel diversions? What are the proposed stagings and their timings?

STAGE 1 - TEMPORARY DIVERSION SEPT 08 – DEC 08

STAGE 2 - TEMPORARY DIVERSION DEC 08 - NOV 09



STAGE 3 - TEMPORARY DIVERSION NOV 09 - MAR 2010

FINAL PERMANENT NAVIGATION CHANNEL MAR 2010



Note: The navigation channel diversions may change due to changes in the dredging programme and the timing for the completion of the new boat ramp

Q. How do I find out more information?

A. For general information regarding the project contact via:

Web: www.sydneyports.com.au

Project Information Line : 1800 177 722

Email: portbotany@boulderstone.com.au

For additional information regarding the Marine Notice please contact NSW Maritime:

Web: www.maritime.nsw.gov.au

NSW Maritime Information Line: 131 256

(8:30 am – 4:30 pm, 7 days)

NSW Maritime (Sutherland): 02 9545 4422

(8:30 am – 4:30 pm Monday to Friday)

Boating Safety Officer (Botany Bay)

Mobile: 0418 460 293