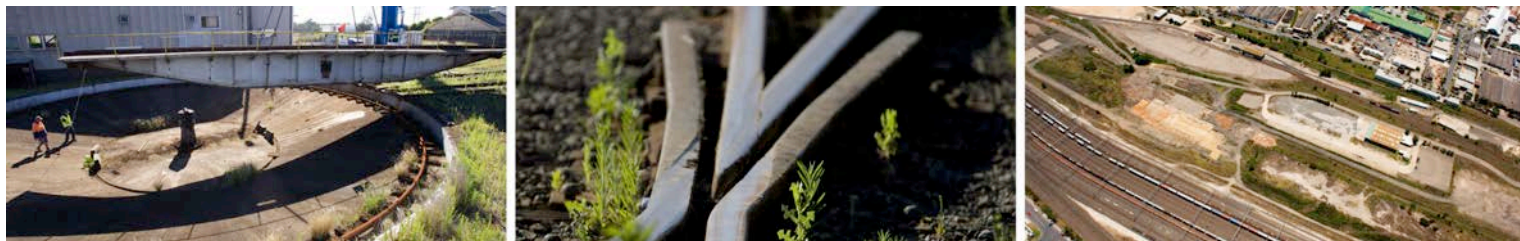


# INTERMODAL LOGISTICS CENTRE (ILC) AT ENFIELD

RESIDENT UPDATE  
December 2011



THE PURPOSE OF THIS RESIDENT UPDATE IS TO PROVIDE ALL INTERESTED COMMUNITY MEMBERS WITH AN OVERVIEW OF THE ILC AT ENFIELD PROJECT AND TO KEEP YOU INFORMED OF CURRENT AND UPCOMING CONSTRUCTION ACTIVITIES AND WORKS.

## BACKGROUND

The Intermodal Logistics Centre (ILC) site at Enfield extends approximately from the intersection of the Hume Highway and Roberts Road, Greenacre in the north, to Punchbowl Road in the south and Cosgrove Road, South Strathfield in the east.

On completion the ILC will include an intermodal terminal, empty container storage facilities, warehousing, a light industrial and commercial area along Cosgrove Road, a new bridge over the existing RailCorp Marshalling Yard, rail connections and an area incorporating ecological and heritage enhancements.

The ILC at Enfield will be part of a network of existing and planned intermodal terminal facilities in Sydney. It will service around a quarter of the total intermodal demand, moving more goods by rail. In doing so, it will mitigate the growth in freight truck numbers on our roads.

## MAIN CONSTRUCTION UPDATE

Leighton Contractors has been awarded the contract to undertake the main construction phase of the ILC at Enfield. Main construction works commenced in July 2011 and are expected to take approximately two years to complete.

The main construction phase of the project includes the delivery of:

- Infrastructure associated with storage warehouses and the Empty Container Storage areas including earthworks, retaining walls, drainage, noise walls and services;
- Infrastructure associated with the Intermodal Terminal, the internal rail siding and through lines, including earthworks, pavement, track work and signalling, retaining walls, drainage and service;
- Internal roads;

- Earthworks for the Light Industrial/Commercial Area along Cosgrove Road;
- Works associated with the reconfiguration of the intersection of Roberts Road and Norfolk Road, including a new slip lane; and
- Utility connections including works to connect the ILC site to the Ausgrid electrical substation in Hillcrest Avenue, Strathfield South

Residents and businesses will be notified in advance by the relevant utility provider regarding any temporary services outages which may be required as part of the works.

## TEMPORARY CHANGES TO PARKING ON WENTWORTH STREET

Pavement tie-ins for kerbs, stormwater works and installation of bridge lights will continue within the designated construction area in Wentworth Street, Greenacre during December 2011.

Traffic barriers erected along part of Wentworth Street adjacent to the new bridge will remain until approximately January 2012 to allow completion of services relocations and pavement tie-in works. During this time, public parking will not be permitted in designated construction areas.

## CHRISTMAS / NEW YEAR HOLIDAY PERIOD

Construction activities will be temporarily suspended between 23 December 2011 and 3 January 2012 for the Christmas/ New Year holiday period. Staff will be on-call during this time should any issues arise via the 1800 708 228.

# INTERMODAL LOGISTICS CENTRE (ILC) AT ENFIELD

RESIDENT UPDATE DECEMBER 2011



## CURRENT CONSTRUCTION ACTIVITIES

Construction activities currently underway or to be commenced during December 2011 include:

- Bulk earthworks, drainage works and retaining wall construction at several locations across the site will continue, including movement and management of low level contaminated soils in some areas on the site;
- Geotechnical investigation works for northern rail connection works near Roberts Road will continue;
- Site establishment and earthworks, including remediation at the site on the corner of Roberts Road and Norfolk Road will continue.
- Drainage works on Cosgrove Road near the southern end of the site will be undertaken. During these works traffic controls will be in place to manage any impacts on traffic caused by these works.
- New drainage will be installed at the southern end of the site for a future rail connection near the Punchbowl Road bridge.

**Note:** All earthworks and remediation of contaminated materials are carried out in accordance with WorkCover and Occupational Health and Safety standards and the requirements of the project approval.

## UPCOMING CONSTRUCTION ACTIVITIES

We will continue to inform and notify you of upcoming works. Some of the works planned for the near future include:

### JANUARY 2012

- Bulk earthworks, drainage works and retaining wall construction at several locations across the site will continue, including movement and management of low level contaminated soils in some areas on the site;
- Site establishment works along the route of the new 11 kV power cable through selected streets in Strathfield South will commence;
- Establishment of erosion and sediment controls, temporary works and clearing of part of the stockpile adjacent to Punchbowl Road; and
- Placement of green waste (tree and plant matter) at the stockpile adjacent to Punchbowl Road will commence;

### FEBRUARY 2012

- Noise wall foundation works adjacent to Roberts Road at the northern end of the site will commence;

- Bulk earthworks, drainage works and retaining wall construction at several locations across the site, including movement and management of low level contaminated soils, will continue;
- Placement of fill materials on the eastern and southern side the stockpile adjacent to Punchbowl Road will commence;
- Site establishment works along the route of the new 11 kV power through selected streets in Enfield will continue; and
- External potable water connection works will commence at Cosgrove Road, Pilcher Street and Hope Street, South Strathfield.

## ENVIRONMENT UPDATE

Leighton Contractors continue to implement environmental management controls at the site in accordance with the approved Construction Environmental Management Plan and the project approval. Some of these controls include:

- Dust management controls including the slowing or cessation of works that may generate dust on dry and windy days, continued use of water carts and "real time" dust monitoring;
- Where applicable, 'spraygrassing' of some stockpile areas during the Christmas / New Year holiday period to prevent dust and enable grass to germinate;
- Ongoing inspection and maintenance of erosion and sediment controls to prevent sediment and turbid water discharge to receiving waters; and
- Undertaking frog surveys prior to commencement of construction works in accordance with frog management documentation.

## CONTACT US

Sydney Ports and Leighton Contractors Pty Ltd welcomes feedback on the ILC at Enfield Project from residents and local businesses. If you are interested in providing feedback or obtaining further information about the project, or if you know someone that requires this information to be translated, please contact Sydney Ports on:

Phone 1800 708 228

Postal PO Box 117, Enfield, NSW 2136

Email [ilcfield.project@sydneyports.com.au](mailto:ilcfield.project@sydneyports.com.au)

Web [www.sydneyports.com.au](http://www.sydneyports.com.au) click on **ILC at Enfield**.