

Rail Supply Chain

PORT BOTANY LANDSIDE IMPROVEMENT STRATEGY (PBLIS)

STEVEDORE DWELL TIME REPORT

JUNE 2010

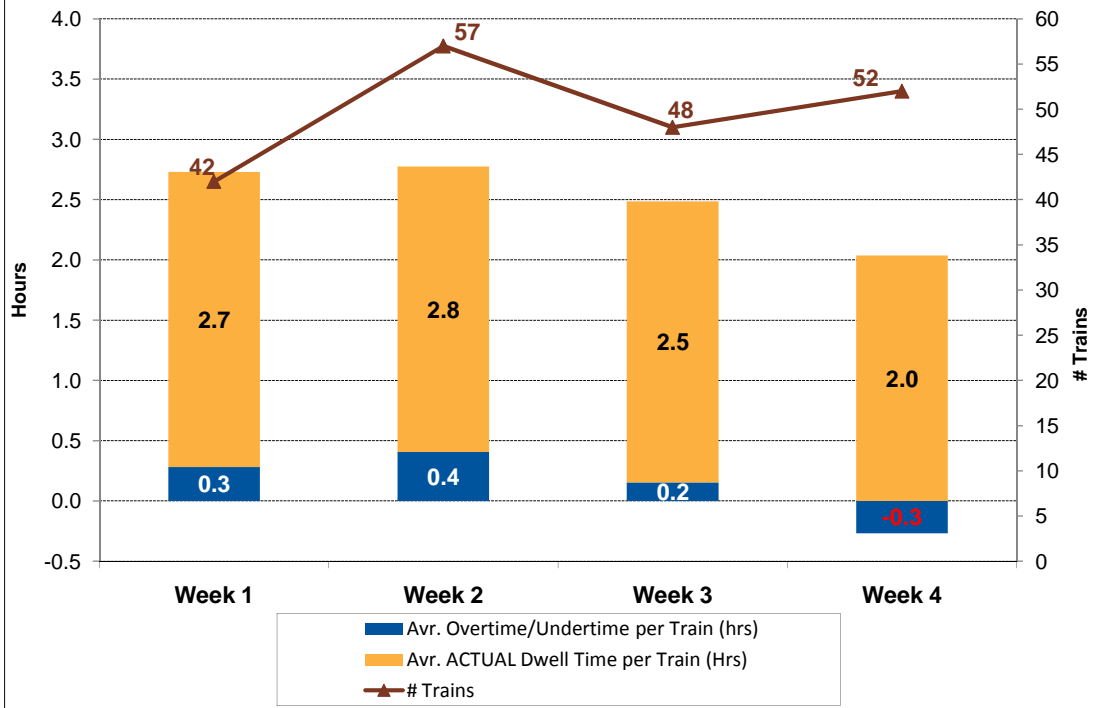
Copyright © 2009 Sydney Ports Corporation. All rights reserved.

Disclaimer. Sydney Ports Corporation (i) collects the information contained in this document (**Information**) from sources over which it has no control, (ii) gives no warranty as to the accuracy or completeness of the Information, and (iii) notes that use of or reliance on the Information is at the user's own risk.

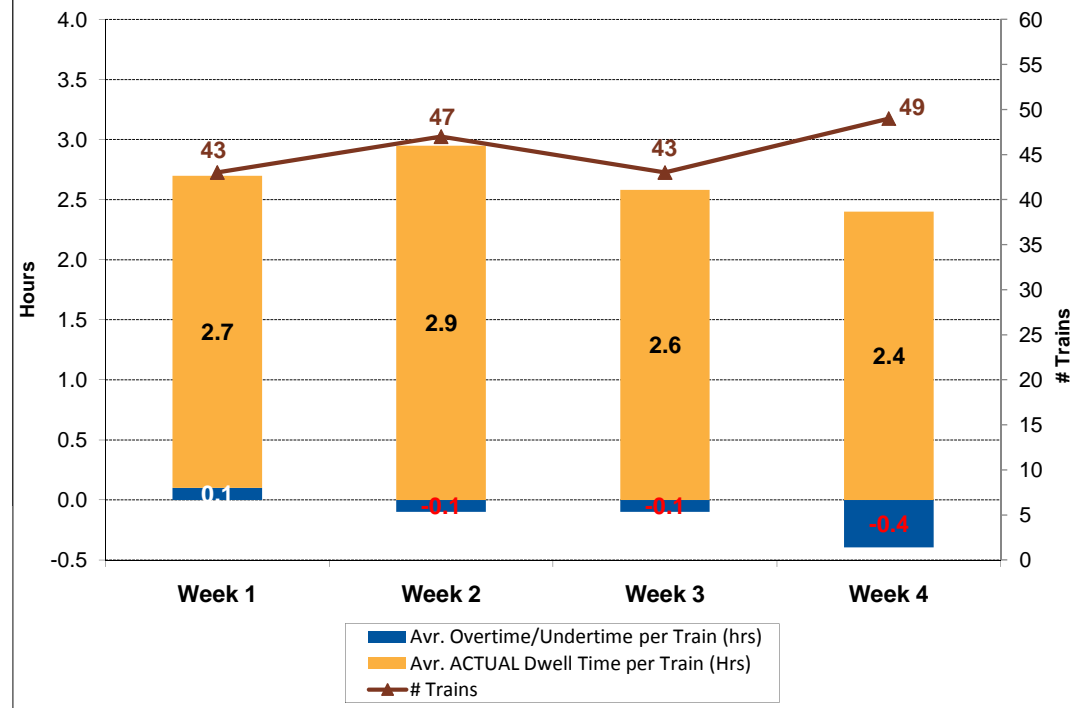
Full terms and conditions of use. Please see www.sydneyports.com.au/copyright__and__disclaimer.

STEVEDORE DWELL TIME - JUNE 2010

PATRICK TERMINAL



DP WORLD TERMINAL



Explanatory Notes:

1. Light Engines, Locomotives and Cancelled trains are excluded from the above.
2. Incomplete train data records have been excluded from the above.
3. Average Actual Dwell Time: Actual turnaround time of trains within each terminal.
4. Average Overtime per train: Difference between Actual versus Planned train turnaround times.
5. Monthly charts are based on weeks (Mon to Sun) rather than total calendar days, see right for details.

June by week:

Week 1	31/05 - 06/06
Week 2	07/06 - 13/06
Week 3	14/06 - 20/06
Week 4	21/06 - 27/06