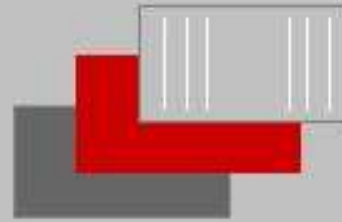


I nternational

I ntermodal

R epairers

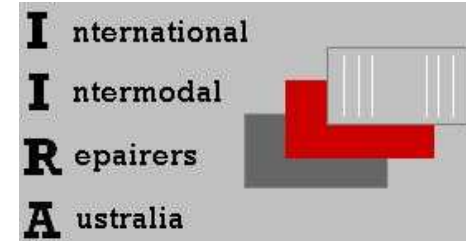
A ustralia



Sydney Ports Cargo Facilitation Committee Transport Workshop

21st July 2009

2001 Park Operators 10



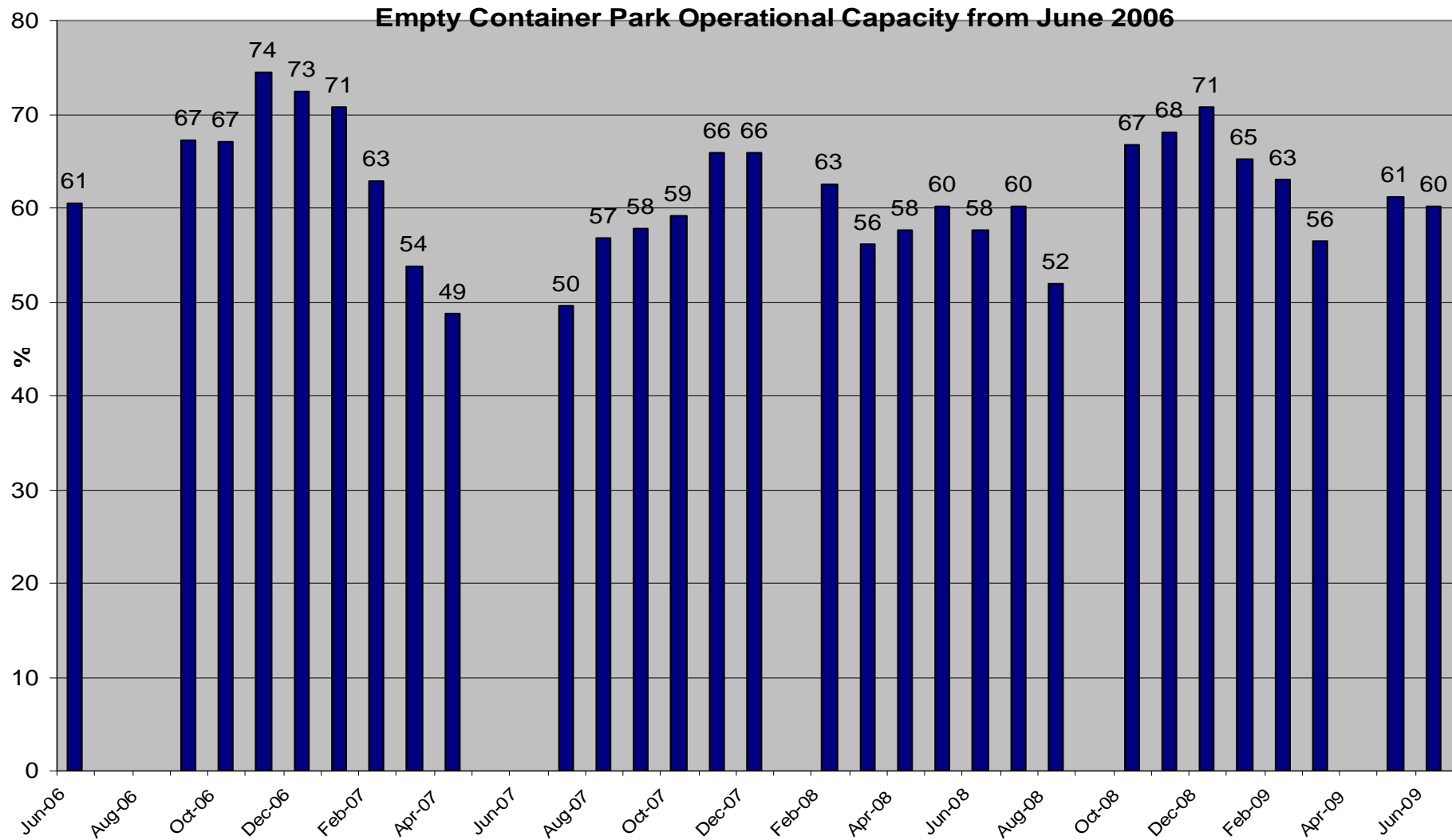
SYDNEY

IIRA OPERATIONAL CAPACITY SURVEY 09.04.2001

PARK	CAPACITY (TEU)	HOLDING (TEU)	
CARGOLINK	2000	680	34.0%
EA ROCKE	4500	2400	53.3%
FLETCHER	1600	250	15.6%
MCS No1	10500	7418	70.6%
MCS Rail	2775	2010	72.4%
PBCP	2800	1500	53.6%
RACE	3000	2000	66.7%
SEATONS	6600	2950	44.7%
SHT	8500	5649	66.5%
TYNES	9500	5800	61.1%
WESTERN	3000	1700	56.7%
TOTAL	54775	32357	
AVAILABLE		22418	
CAPACITY		59.1%	

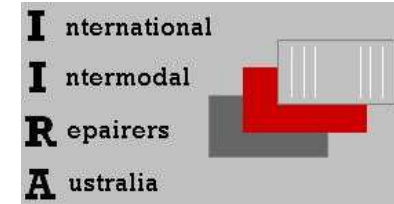


I nternational
I ntermodal
R epairers
A ustralia



SYDNEY – ECP's 5 operators

IIRA OPERATIONAL CAPACITY SURVEY 20.07.2009



PARK	CAPACITY (TEU)	Holding 20'	Holding 40'	HOLDING (TEU)	
MCS No1	4500	638	1409	3456	76.8%
MCS Rail	10000	3030	1253	5536	55.4%
Patrick Port Botany	4000	617	619	1855	46.4%
SEATONS	6800	1630	1862	5354	78.7%
P&O Port Botany	9000	2153	1885	5923	65.8%
TYNES	10500	2654	2341	7336	69.9%
TYNE / ACFS	4000	594	421	1436	35.9%
WESTERN	3200	605	824	2253	70.4%
MT Movements (Mol Pt.)	2500	74	569	1212	48.5%
Port Botany Link	2400	296	636	1568	65.3%
POTA Link	3000	250	876	2002	66.7%
TOTAL ACTUAL		12541	12695		
TOTAL TEU	59900	12541	25390	37931	
AVAILABLE				21969	
CAPACITY				63.3%	

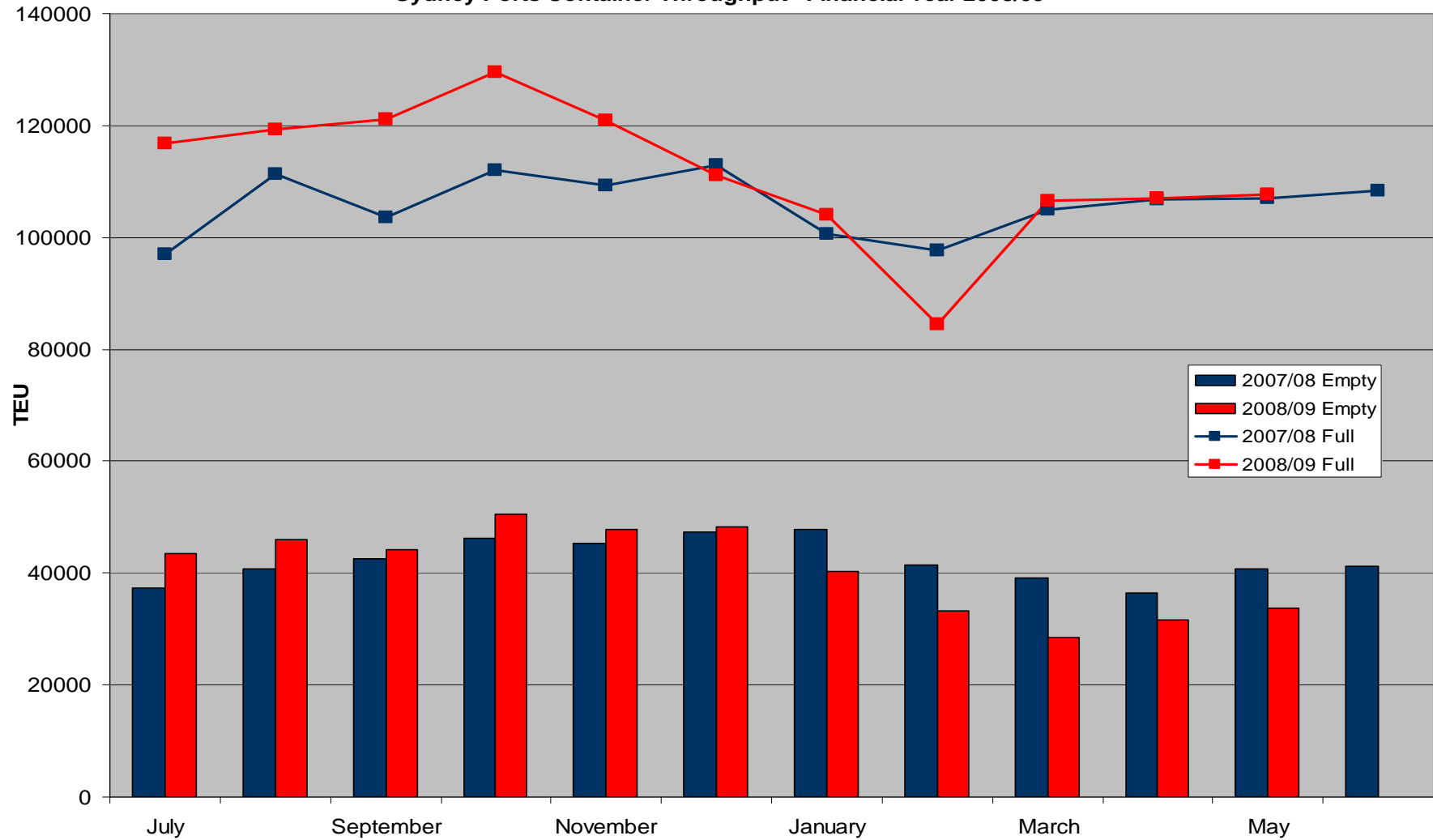
% of Total TEU

33.06%

66.94%

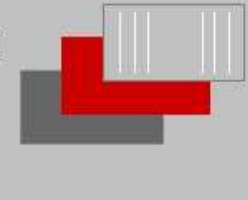


Sydney Ports Container Throughput - Financial Year 2008/09



Current market

I nternational
I ntermodal
R epairers
A ustralia



- Global Financial Crisis , Import volumes reduced
- Shipping lines pressing for rate reductions
- Shipping lines have rationalised tonnage , certain consortia / strings have consolidated
- Unstable market place , increased empty holding capacity in port precinct, approx 5,000 teu.
- Very competitive market place for parks
- Shipping lines are rationing the supply of 20' units for Sydney exports
- In general 40 units dwell time is increasing , 4500 more 40 units than this time last year
- Empty Repositioning is limited due to vessels being full on tonnage or geometric northbound and ports of destination being in surplus
- Talk of empty loaders to evacuate surplus

PBLIS



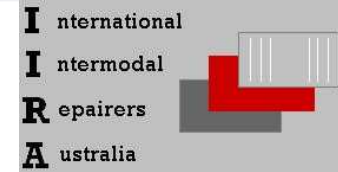
- Time trails showed best average TTT 5 mins worst 24 mins average 16 mins
- 24 / 7 v extended hours ? Which hours ?
- Shipping Line and Road carrier support required
- Which parks ?, Railhead parks , M&R parks , repo facilities
- Shipping Lines require de-hires at the appropriate park location for export shipper release , which may not be in Port precinct
- Contingency notices are being posted on 1-Stop

Standard Operating Hours

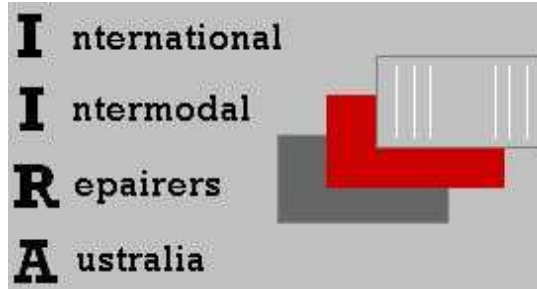
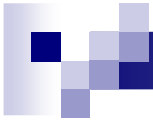
- MCS Banksmeadow Mon-Fri 0630 – 1600 Sat
- MCS Cooks River Mon-Fri 0630 – 1600 Sat
- MT Movements Mon-Fri 0600 – 1630 Sat
- PATRICK Botany Link Mon-Fri 0530 – 1700 Sat
- PATRICK Botany Park Mon-Fri 0700 – 1700 Sat
- PATRICK Camellia 20 Mon-Fri 0600 – 1700 Sat
- POTA Botany Mon-Fri 0500 – 1600 Sat
- TYNE St Peters Mon-Fri 0600 – 1700 Sat 0700 - 1200
- Tyne ACFS Mon-Fri 0600 – 1700 Sat
- WCS Mon-Fri 0630 – 1700 Sat

- Trading outside standard hours is upon application

In the meantime



- Park Operational Management Contact details have been provided to the ATA & associates
- We encourage Road Carriers to communicate with Container Park Managers if requiring out of hours receivals.
- Commit by providing the actual numbers for de hire by email.
- Park Managers will assist where possible
- Contingency notices are being posted on 1-Stop



■ THANK YOU