



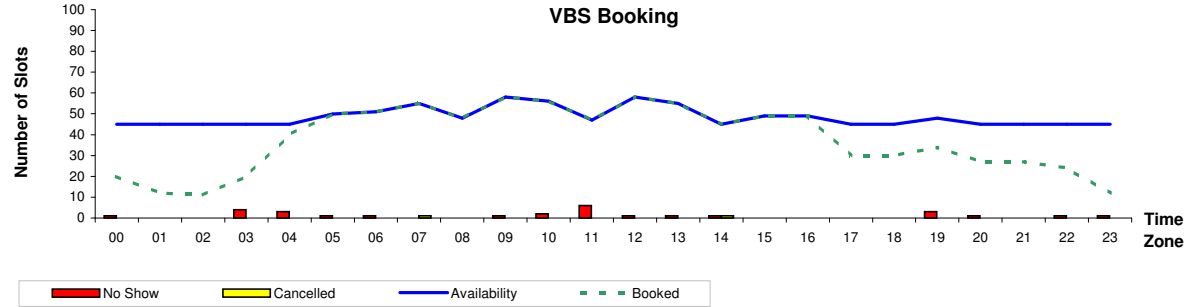
## Daily Report - Port Botany

Terminal: Patrick

Date: Wednesday 25/02/2009

### 1. VBS Slot Booking

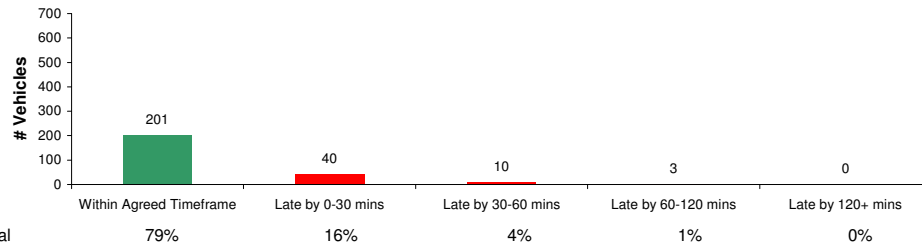
Minimum Slots Made Available  Maximum Slots Made Available



Time Slots	00	01	02	03	04	05	06	07	08	09	10	11	12	13	14	15	16	17	18	19	20	21	22	23	Total	
Availability	45	45	45	45	45	50	51	55	48	58	56	47	58	55	45	49	49	45	45	48	45	45	45	45	1,164	
Booked	20	12	11	20	40	50	51	55	48	58	56	47	58	55	45	49	49	30	30	34	27	27	24	12	908	
No Show	1	0	0	4	3	1	1	0	0	1	2	6	1	1	1	0	0	0	0	3	1	0	1	1	28	
Cancelled	0	0	0	0	0	0	0	1	0	0	0	0	0	0	1	0	0	0	0	0	0	0	0	0	2	
																									78%	
																										2%
																										0%

Peak (orange) Shoulder (yellow) Off-Peak (green)

### 2a. Vehicle Processing Time



Total Processing Delay (minutes)  Avg. Processing Delay (minutes)

**Note:**

- Vehicle processing time is measured from start of Queue (DPW: corner of Charlotte and Friendship road; Patrick: MSIC gate) to Out-Gate
- Agreed Timeframe is 60 minutes for 1st container and 15 minutes thereafter for each container. When a truck comes late (more than 30 minutes from the End of the booked Time Zone), agreed timeframe is 120 minutes

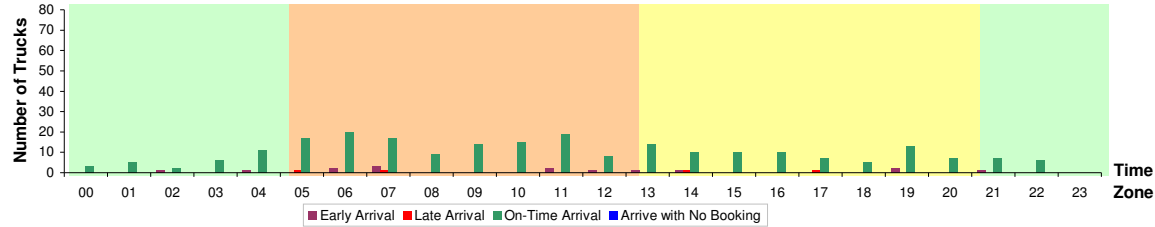


## Daily Report - Port Botany

Terminal: Patrick

Date: Wednesday 25/02/2009

### 2b. Carrier Performance

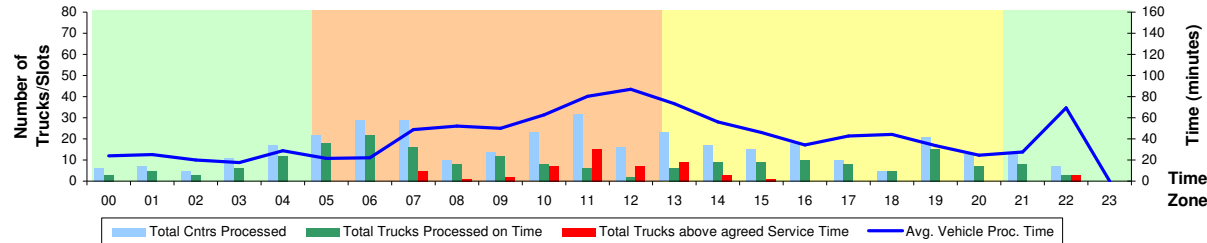


Time Slots	00	01	02	03	04	05	06	07	08	09	10	11	12	13	14	15	16	17	18	19	20	21	22	23	Total
Total Trucks Sampled	3	5	3	6	12	18	22	21	9	14	15	21	9	15	12	10	10	8	5	15	7	8	6	0	254
On-Time Arrival	3	5	2	6	11	17	20	17	9	14	15	19	8	14	10	10	7	5	13	7	7	6	0	235	
Early Arrival	0	0	1	0	1	0	2	3	0	0	0	2	1	1	1	0	0	0	0	2	0	1	0	0	15
Late Arrival	0	0	0	0	0	1	0	1	0	0	0	0	0	0	1	0	0	1	0	0	0	0	0	0	4
Arrive with No Booking	0	0	0	0	0	0	0	0	0	0	0	0	0	0	0	0	0	0	0	0	0	0	0	0	0

**Note:**

- Early Arrival is defined as arrival at the Queue more than 30 minutes earlier than the Start of the booked Time Zone
- Late Arrival is defined as arrival at the Queue more than 30 minutes from the End of the booked Time Zone

### 2c. Terminal Performance



Time Slots	00	01	02	03	04	05	06	07	08	09	10	11	12	13	14	15	16	17	18	19	20	21	22	23	Total
Total Cntrs Processed	6	7	5	11	17	22	29	29	10	14	23	32	16	23	17	15	18	10	5	21	13	14	7	0	364
Avg. Vehicle Proc. Time	24	25	20	18	29	21	22	49	52	50	63	80	87	73	56	46	34	43	44	34	24	28	69	0	46.2 mins
Total Trucks Processed on Time	3	5	3	6	12	18	22	16	8	12	8	6	2	6	9	9	10	8	5	15	7	8	3	0	201
Total Trucks above agreed Service Time	0	0	0	0	0	0	0	5	1	2	7	15	7	9	3	1	0	0	0	0	0	0	3	0	53
Dual Slots	1	1	1	1	0	1	3	5	1	0	2	6	3	2	2	0	1	0	0	4	1	0	0	0	35

**Note:**

- Dual Slot is defined as when a truck processes at least one export and one import containers in a single trip.



## Daily Report - Port Botany

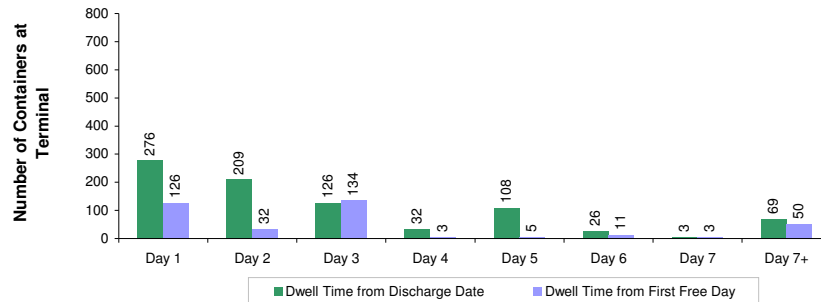
Terminal: Patrick

Date: Wednesday 25/02/2009

### 2d. Vehicle Processing Time (Paperless vs Manual)

	Avg. Vehicle Processing Time from Queue to Out-Gate(TTT):	Avg. Elapsed Time from In-Gate to Out-Gate:
Avg. Vehicle Proc. Time	0:46	0:43
Avg. Vehicle Proc. Time - Paperless	0:46	0:43
Avg. Vehicle Proc. Time - Manual	0:18	0:11
Avg. Time Difference (Manual vs Paperless)	-28.3 minutes	Paperless (% Truck volume) 99.6%

### 3. Import Container Dwell Time at Terminal



Total number of containers that stays beyond 3rd day of Free Storage 72

**Note:**

- Container Dwell Time is defined as the number of days that an import container stays at terminal after it is discharged from the vessel (or after it's First Day of Free Storage).
- For DP World, container data is based on containers that arrived in previous 60 days only.
- For Patrick, import container data include all containers that are still at the terminal.

Total Number of Containers at the Terminal 4,608 This includes all containers, including Exports, Imports, Empties etc

**Disclaimer:**

Whilst every effort has been made to ensure that information contained in this report is accurate, Sydney Ports Corporation gives no guarantee regarding this information and accepts no responsibility for any inconvenience, or any direct or consequential loss, arising from information disclosed herewith. Readers should undertake their own enquiries in relation to any of the facts referred to before acting on them.